

## 研究所の概要

奈良文化財研究所は文化遺産を総合的に研究する機関です。奈良は南都とも呼ばれる古都で多数の古建築、古美術品があり、研究所はこれらを総合的に研究する目的で設立されました。1950年代に起きた平城宮跡の保存問題から埋蔵文化財にも関わり、平城宮跡や藤原宮跡の発掘調査と研究に、多大の成果をあげてきました。これらは古代都城形成に関する海外との学术交流にも生かされています。

また、貴重な埋蔵文化財を保存するために当研究所が開発した高度な修復技術は、世界各地の遺跡や遺物の保存に生かされています。平城宮跡では朱雀門に次いで第一次大極殿の復原を実施中で、ここでの復原技術は全国の史跡整備に生かされています。さらに、発掘調査に携わる自治体専門職員や、海外の研究者を対象とした研修・共同研究などをおこなう研修センターの役割も果たしています。

## Outline of the Institute

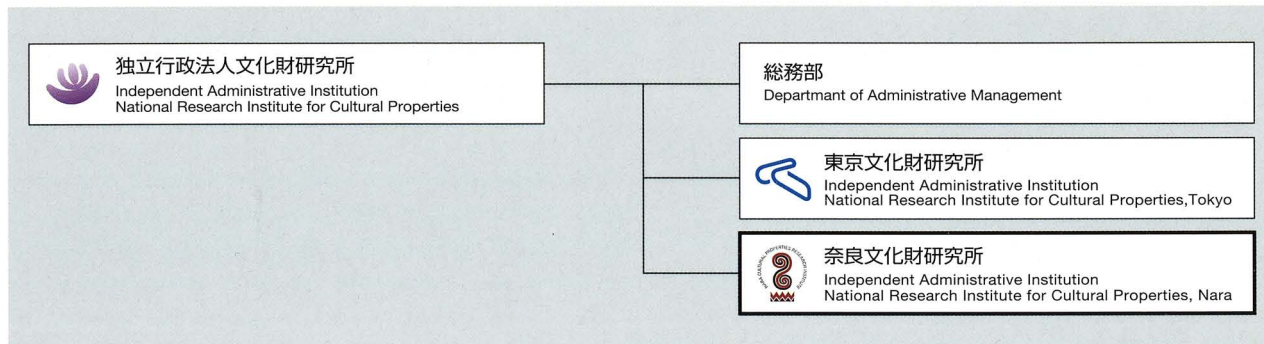
The National Research Institute for Cultural Properties, Nara, is an organization committed to comprehensive research on ancient cultural heritage. The ancient city of Nara is known for its wealth of ancient architecture and historical works of art, and the Institute was established to conduct research on these materials. Inspired in the mid-1950s, by the problem of preserving the Nara palace site, to get involved in research on buried cultural properties as well, the Institute has achieved significant results in the excavation and study of the Nara and Fujiwara palace sites. These have contributed to international academic exchanges aimed at shedding light on the development of ancient capitals.

In addition, sophisticated techniques of restoration, developed at the Institute for preserving valuable buried cultural materials, have been applied in the preservation of sites and artifacts throughout the world. At the Nara palace site, reconstruction of the Former Imperial Audience Hall is underway, following that of Suzaku Gate. The techniques of reconstruction used in these projects are being applied in the presentation of historic sites throughout the country. In addition, the Institute also serves as a center for the training of, and for conducting joint research with, both local government employees involved in archaeological excavations, and foreign researchers.

## 事業内容 Cultural Heritage Division



研究所の組織 Organization of the Institute



## 研究所のあゆみ

奈良文化財研究所は、文化庁の前身の文化財保護委員会に附属する文化財の調査研究機関として1952年に発足しました。当初は、歴史・建造物・美術工芸の3研究室と庶務室とがありました。その後、平城宮跡の保存が問題となったのを契機として1963年に平城宮跡発掘調査部が、1973年には飛鳥藤原宮跡発掘調査部がそれぞれ設置され、飛鳥保存問題に関する国の施策の一環として、1970年の閣議決定に基づいて1973年には飛鳥資料館が設置されました。また、1974年には国土開発に起因する埋蔵文化財問題に対処する方策の一つとして、埋蔵文化財センターが設置されました。

その後、省庁の再編など政府の行政改革推進の方針に基づき、府省に所属する研究機関も再編成され、文化庁に附属する東京国立文化財研究所と奈良国立文化財研究所の二つの研究機関は2001年4月に統合し、独立行政法人文化財研究所となりました。それぞれの研究所は東京文化財研究所と奈良文化財研究所となり、独立行政法人の本部は奈良文化財研究所の庁舎内に置かれました。

## History of the Institute

The National Research Institute for Cultural Properties, Nara, was founded in 1952 as an auxiliary organization of the National Commission for Protection of Cultural Properties, the predecessor of the current Agency for Cultural Affairs, with a view to conducting research on cultural properties. At the time of its inception, the Institute had three research divisions, specializing in history, architecture, and art, as well as a General Affairs Division. The growing necessity to protect the Heijo palace site led to the inception of the Division of Heijo Palace Site Investigations in 1963. In 1973, the Division of the Asuka/Fujiwara Palace Site Investigations was established, and in 1975, the Asuka Historical Museum was opened, prompted by a Cabinet resolution made in 1970 as part of the government's efforts to preserve the cultural properties of the Asuka area. In order to help meet the demand for rescue excavations conducted by local governments, the Center for Archaeological Operations was established in 1974 to train local excavators and provide advices to local authorities.

As part of the Japanese Government's reform initiatives, national research institutes belonging to government ministries and agencies are undergoing reorganization. Consequently, the National Research Institute for Cultural Properties, Tokyo, and the Nara National Cultural Properties Research Institute were integrated and reorganized as branches of the Independent Administrative Institution in April 2001. The head office for this independent institution is located at the National Research Institute for Cultural Properties, Nara.



奈良文化財研究所旧庁舎  
Former building of the Institute

■ 1952年／昭和27年4月

文化財保護委員会の附属機関として奈良文化財研究所(庶務室・美術工芸研究室・建造物研究室・歴史研究室)を奈良市春日野町50番地に設置

■ 1954年／昭和29年7月

奈良国立文化財研究所と改称

■ 1960年／昭和35年10月

奈良市佐紀東町の平城宮跡に発掘調査事務所を設置

■ 1963年／昭和38年4月

平城宮跡発掘調査部を設置

■ 1968年／昭和43年6月

文化庁が発足 その附属機関となる

■ 1970年／昭和45年4月

平城宮跡資料館を開館

■ 1973年／昭和48年4月

会計課・飛鳥藤原宮跡発掘調査部・飛鳥資料館を設置

■ 1974年／昭和49年4月

庶務部(庶務課・会計課)と埋蔵文化財センターを設置

■ 1975年／昭和50年3月

奈良県高市郡明日香村奥山に飛鳥資料館を開館

■ 1980年／昭和55年4月

美術工芸研究室を奈良国立博物館の仏教美術資料研究センターに移管

■ 1980年／昭和55年4月

庁舎を奈良市二条町に移転  
平城宮跡発掘調査部・埋蔵文化財センターを庁舎に移転統合

■ 1988年／昭和63年8月

飛鳥藤原宮跡発掘調査部庁舎を橿原市木之本町94-1に新営

■ 2001年／平成13年4月

独立行政法人文化財研究所 奈良文化財研究所となる

■ April 1952

The Institute was established as an auxiliary organization of the National Commission for Protection of Cultural Properties, with a General Affairs Division, Historical Research Division, Architecture Research Division, and Art Research Division, at 50 Kasugano-cho, Nara.

■ July 1954

The Institute was officially named the Nara National Cultural Properties Research Institute.

■ October 1960

The office of the Heijo Palace Site Investigations opened in the former Nara palace site in Sakihigashi-machi, Nara.

■ April 1963

The Division of Heijo Palace Site Investigations was established.

■ June 1968

The Agency for Cultural Affairs was established, with the Institute under its control.

■ April 1970

The Nara Palace Site Museum opened.

■ April 1973

The Division of Asuka/Fujiwara Palace Site Investigations and the Asuka Historical Museum were established. The Institute's Accounting Section was also established.

■ April 1974

The Department of General Affairs and the Center for Archaeological Operations were established.

■ March 1975

The Asuka Historical Museum opened at Okuyama, in the village of Asuka, Nara prefecture.

■ April 1980

The Art Research Division transferred to the Research Center for Buddhist Art, of the Nara National Museum.

■ April 1980

The Institute relocated to Nijo-cho, Nara. The Division of Heijo Palace Site Investigations and the Center for Archaeological Operations were integrated into the Institute.

■ August 1988

A new headquarters building was built for the Division of Asuka/Fujiwara Palace Site Investigations at 94-1, Kinomoto-cho, Kashihara, Nara prefecture.

■ April 2001

The National Research Institute for Cultural Properties, Nara, was granted the status of independent administrative institution.

## 文化遺産研究部

歴史的建造物・伝統的建造物群、書跡・歴史資料、遺跡・庭園などの文化遺産に関し、建造物研究室・歴史研究室・遺跡研究室の3室をおき、総合的な調査研究をおこなっています。

建造物研究室では、建物の実地調査、発掘された建物遺構の分析、保存修理のデータなどをもとに古代建築の調査研究をおこない、その成果を生かして平城宮の大極殿院などの建物復原に協力しています。また社寺や民家、集落・町並み、近代化遺産などに関して総合調査をおこない、文化財建造物の保存修理事業にも協力しています。

歴史研究室では、典籍文書などの書跡資料と歴史資料の調査研究をおこなっています。書跡資料では、主要な調査対象である興福寺や薬師寺の南都諸大寺をはじめ、近畿地方の諸寺院で調書作成、写真撮影を実施し、その成果の公表に努めています。歴史資料では、絵図や板木などを調査対象とし、現在は「北浦定政関係資料」の調査・研究にあたっています。

遺跡研究室では、庭園を総合的に調査研究し、その成果の公表に努めています。現在の主たるテーマは、中国・韓国を含めた東アジアの古代庭園に関する調査研究と日本の発掘庭園に関する調査研究です。また、全国各地の大規模遺跡について、その整備方法や管理・活用状況に関し調査・分析をおこなうとともに、地方自治体等がおこなう遺跡の整備事業にも協力しています。

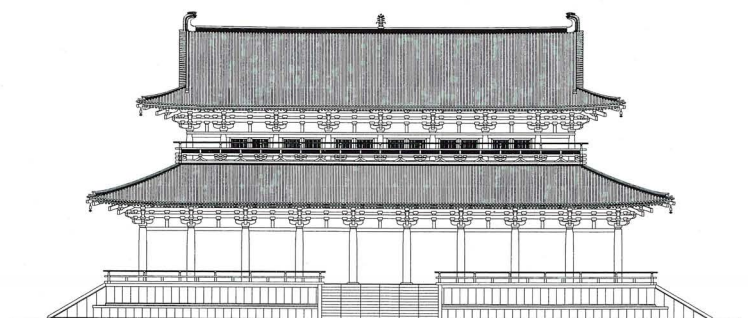
## Department of Cultural Heritage

The Department is comprised of three sections : the Architectural History Section, Historical Records Section, and the Site and Garden Section. Based on collaboration among these sections, its overall function is to carry out comprehensive research on historic buildings, documents, and on gardens and other sites.

The Architectural History Section studies ancient architecture based on research conducted on existing historic buildings, the structural remains of excavated building sites, as well as on data obtained in the restoration of historic buildings. The results of this research have been applied to reconstruction works such as the Imperial Audience Hall at the Nara palace site. As a means of contributing to the protection of historic buildings, this section also conducts comprehensive research regarding temple and shrine edifices, vernacular houses, cities, towns, villages, and the heritage of Japan's modernization period.

The Historical Records Section engages in the study of historical documents and other materials, including drawings and woodblock prints. In the course of its ongoing research concerning prominent temples located in the Kinki region, a record of historical documents possessed by the temples is being created and preserved as a photographic archive, with some of these results already made available to the public. This section is currently engaged in the research of historical materials related to Kitaura Sadamasa, who laid the foundation for the study of the Nara palace and capital sites at the end of the Edo period.

The Site and Garden Section conducts extensive research on historic gardens. Current projects include research on the ancient gardens of East Asian countries, and the analysis of Japanese gardens excavated at archaeological sites. This section also carries out field surveys on restored historic sites throughout Japan, and develops guidelines regarding their restoration, management, and public use. Its members also play an important role as advisors for on-site restoration projects being implemented by various local governments.





石田城五島氏庭園実測調査

Surveying the garden of  
Ishida Castle in  
Nagasaki Prefecture



薬師寺の古文書調査

Investigating old documents  
at Yakushiji temple, Nara



出雲大社殿の調査

Investigation of the buildings,  
at Izumo Taisha shrine

## 平城宮跡発掘調査部

奈良時代(710~784)の天皇治世のための施設や宮殿と、国の中央官庁をあわせて設置した平城宮の発掘調査研究を担当しています。1954年以来、組織的な調査を継続し、今までに130haの平城宮跡のほぼ30%の発掘を進め、古代史研究上、多くの重要な成果をあげています。また、当時の首都平城京にあった貴族の邸宅や役人、庶民の住まい、あるいは公設の市場や寺院の遺跡の研究と発掘調査も進めており、1200年の間、地下に埋もれていた歴史のさまざまな事実を解明してきています。平城宮跡の既発掘地では、建物跡を基壇で示したり、木を植えて建物の柱の位置を示したり、さらに朱雀門や東院庭園をはじめ、建物や遺構を復原するなど、かつての平城宮の姿をしのばせる整備活用事業を進めており、そのために必要な調査研究も担当しています。遺跡に残された遺構や遺物の分析を通じて歴史の事実を解明するのが発掘調査研究です。遺跡の発掘や出土した膨大な遺物の基礎的な整理は、研究をささえる重要な作業です。

## Department of Heijo Palace Site Investigations

This Department is in charge of archaeological investigations at the Nara palace site, where facilities were established for the emperor to rule during the Nara period (710-784), along with the imperial domicile and government offices. Since 1954, coordinated investigations of the site have been in progress, with excavation of nearly 30% of the 130 hectare site being completed, resulting in many discoveries important for the study of ancient history. In addition, excavation and research on residences of aristocrats, lower officials, and commoners are carried out in the surrounding Nara capital site, along with investigations of public market places, temples, and other sites, bringing to light many historical facts which have lain buried for over 1200 years. Excavated portions of the site are presented to the general public in various ways which convey the original appearance of the Nara palace site. These include reconstructing the foundation platforms where buildings once stood, planting shrubs to indicate the positions of a building's pillars, or reconstructing the facilities themselves, as in the case of Suzaku Gate and the East Palace Garden. The aim of excavation is to clarify the historic past through the analysis of artifacts and features that survive in archaeological sites. Archaeological excavation and the processing of great volumes of primary data obtained from ancient sites are vital tasks which further research on ancient history.



興福寺一乗院庭園の発掘調査  
Excavation of the Ichijōin garden,  
Kōfukuji temple



平城宮跡整備状況

Nara palace site,  
partially reconstructed and landscaped



平城宮第一次大極殿院西樓の発掘調査

Excavation to the west of the Former Imperial  
Audience Hall compound



興福寺中金堂の発掘調査

Excavation of the central main hall,  
Kofukuji temple



## 飛鳥藤原宮跡発掘調査部

## Department of Asuka/Fujiwara Palace Site Investigations

奈良県高市郡明日香村から橿原市にかけての「飛鳥・藤原」地域は、わが国古代国家成立期の歴史的な舞台であり、6世紀末から8世紀初めに至る間、政治・経済・文化の中心地でした。そして今、この地域の地下には、宮殿や豪族の居館、最古の本格的寺院である飛鳥寺をはじめとする寺々のほか、工芸品などを製作した総合工房や漏刻(水時計)台、墳墓など、さまざまな遺跡が眠っています。また、この地域の北半には、古代国家の首都で最初の計画都市・藤原京がおかれました。ここには天皇の住まいや国政、国家的儀式をおこなう殿舎などの建つ藤原宮を中心に、道路で碁盤目状に区画された京域が方5km以上の範囲に広がっていました。

当調査部では、これら遺跡の発掘調査を通じて、古代国家の具体的な歴史像を復原すべく、学際的な調査研究をおこなっています。その成果は、遺跡発掘調査説明会や報告書類、展示室などで公開するとともに、遺跡の保存・活用に取り組んでいます。

The Asuka/Fujiwara region of Nara prefecture, extending from the village of Asuka to the city of Kashihara, was the historic setting for the emergence of the ancient Japanese state, and served as the political, economic, and cultural center from the end of the sixth to the first part of the eighth centuries. Accordingly, a variety of archaeological remains lie dormant beneath the ground, including imperial palaces and the residences of elite families, the sites of numerous temples including Asukadera, the oldest cloistered Buddhist temple in Japan, plus the remains of tombs, the earthen podium of a water clock, and a workshop complex for the production craft items. Also, in the northern half of this region lies the Fujiwara capital, built on a rectangular grid spreading out five kilometers on a side and centering on the Fujiwara palace, located in the center of the capital and containing the emperor's residence, along with halls where ceremonies of state were conducted.

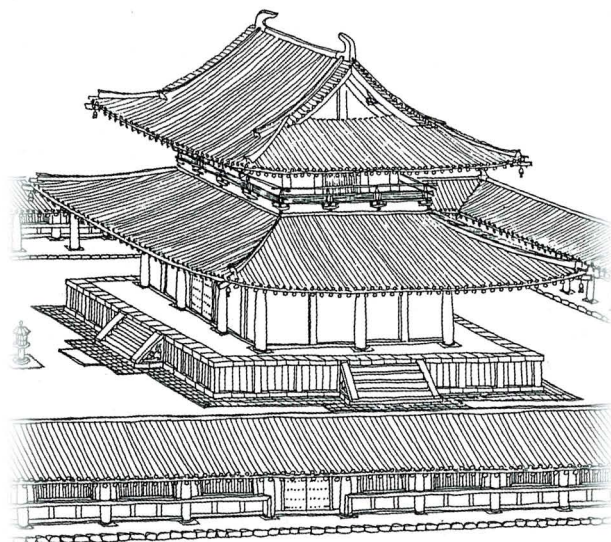
Through the excavation of these sites, interdisciplinary investigations are conducted by the Department with the aim of reconstructing a concrete historic image of the ancient state. In addition to making these results publicly available through public viewings at excavations, publication of research results, exhibitions at its main facility, the Department is also in charge of the preservation of these sites and utilization for the public benefit.



山田寺跡 金堂基壇と周囲の瓦敷き舗装

山田寺は、蘇我倉山田石川麻呂によって、  
舒明13年(641)に造営が開始された。

Podium of the Main Hall with a surrounding  
pavement of roof tiles, Yamadadera temple site





特別史跡藤原宮跡 朝堂院東第一堂

穴に落とし込まれた礎石と礎石を据えていた根石がみえる。

The Fujiwara Palace Site, a National Historic Monument:  
First East Hall of the State Halls compound



藤原宮跡 大極殿とその周辺

1300年前の首都・藤原京は、694年からわずか16年間の都であった。

The Fujiwara palace site: the Imperial Audience Hall and environs

## 飛鳥資料館

飛鳥時代(6・7世紀)や飛鳥地方の歴史を展示・解説した、小規模ながら総合的な博物館です。展示品には、高松塚古墳出土の鏡・玉・飾り金具など、飛鳥寺・川原寺・大官大寺・山田寺出土の瓦・磚仏など、石神遺跡出土の噴水施設である須弥山石と石人像、水落遺跡でみつかった水時計遺構の模型、飛鳥地区と藤原京全景の復原模型などがあります。屋外には、須弥山石や石像の噴水装置、導水施設である酒船石、猿石などの模造品が並んでいます。また、1994年に増設した展示室には、山田寺回廊跡から出土した建築部材を化学処理し、これを生かして再構築した3間分の回廊を復原・展示しています。

毎年、春期・秋期には飛鳥にちなんだ特別展示もおこなっており、2003年度春期には「ASUKA 1/500」を、秋期にも飛鳥をテーマにした展示を企画しています。年間来館者は、約6万人です。

## Asuka Historical Museum

This facility is a small but comprehensive museum exhibiting and explaining the history of the Asuka period (6th to 7th centuries) and the Asuka region. The items exhibited include a mirror, beads, metal coffin fittings and other items from the Takamatsuzuka Tomb; roof tiles and tiles bearing Buddha images in relief, used at Asukadera, Kawaradera, Daikandaiji, Yamadadera and other temple sites; stone figures and a decoratively carved stone, known by the name of Shumisen, found at the Ishigami site and which was a part of a water fountain; a model of the water clock facility discovered at the Mizuochi site; models of the complete expanse of the Asuka area and the Fujiwara capital. Outdoor exhibits include replicas of the Shumisen stone and stone figures used as a water fountain, and the Sakafune-ishi and Saru-ishi stones, which were designed to channel the flow of water. Also, in a new exhibition room added to the museum in 1994, a three-span reconstruction of the cloister of Yamadadera was made using scientifically preserved architectural materials recovered from the site.

Special exhibitions on Asuka-related themes are held annually in the spring and fall; for the spring of 2003 an exhibition titled "ASUKA 1/500" is planned. The museum is visited by approximately 60,000 people annually.



特別講演会風景

View of a lecture at the museum



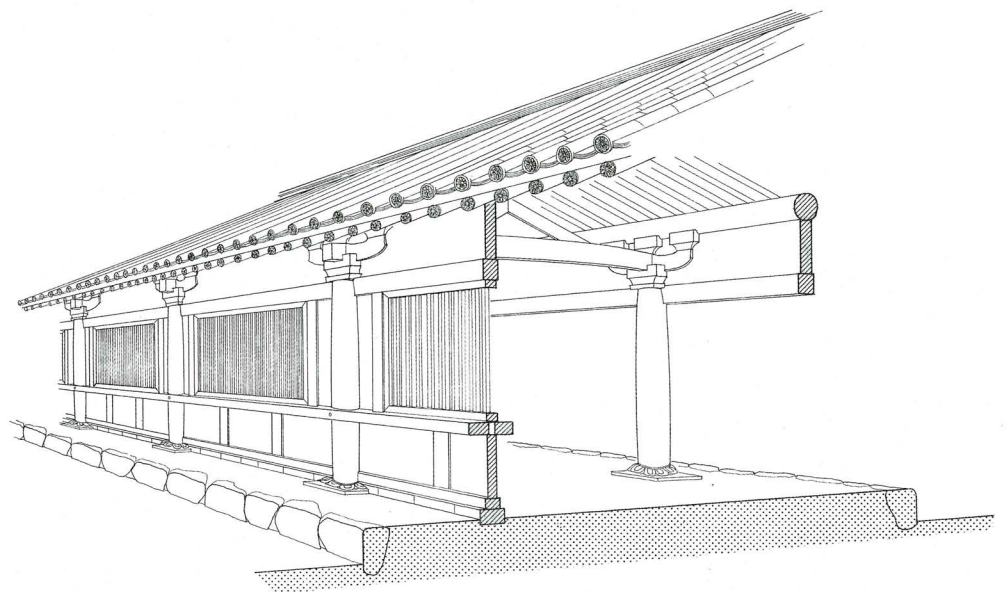
展示風景「石神遺跡の石人像」

View of the exhibits:  
stone deity figures from the Ishigami site



展示風景「復原された山田寺東回廊」

View of the exhibits: reconstructed portion of the eastern cloister of Yamadadera temple



## 埋蔵文化財センター

遺跡調査技術研究室・遺物調査技術研究室では、官衙遺跡の調査技術、遺跡を探る遺跡探査技術の研究など、遺跡・遺物調査技術に関する研究をおこなっています。古環境研究室では、古環境の復元的研究、年輪年代学による考古学的研究をおこなっています。保存修復科学研究室では、遺物や遺跡の分析的研究、保存修復に関する自然科学的研究をおこなっています。保存修復工学研究室では、遺跡保存整備に関する工学的手法の開発研究など幅広い研究をおこなっています。文化財情報研究室では、埋蔵文化財を中心とした不動産文化財の情報収集・整備をおこない、情報機器によるその供用と活用をおこなっています。そして、国際遺跡研究室では、当研究所がおこなうすべての海外交流についてコーディネートしています。

また、当センターの主要な事業には、地方公共団体等が実施する発掘調査や保存整備に関する指導・助言、その専門職員に対する埋蔵文化財に関するあらゆる分野の研修事業の実施があります。

## Center for Archaeological Operations

The Sites Research Methodology Section and the Artifacts Research Methodology Section engage in the study of investigative techniques appropriate for ancient artifacts and ancient sites, such as methods for studying the remains of ancient administrative offices, and the use of archaeological prospection for finding sites. The Paleo-Environment Section is responsible for research on ancient environments, and archaeological research based on dendrochronology. The Conservation Science Section conducts scientific analyses of ancient artifacts and sites, as well as research in the natural sciences related to preservation and restoration. The Conservation Technology Section is engaged broadly in the research and development of engineering methods for preserving and maintaining ancient sites. The Cultural Properties Data Section gathers and organizes information on buried cultural properties and other immovable cultural properties, while offering and encouraging use of this information by electronic means. The International Research Sites Section is responsible for coordinating all international exchange programs initiated by the Institute.

As part of its core responsibilities, the Center also gives advice and guidance to local government groups to assist them in excavating or preserving and restoring ancient sites, and offers government employees training in all fields associated with buried cultural properties.



測量研修における3Dスキャナー実習

Training in 3D-scanner operation



環境考古学研修

Training course in environmental archaeology



発掘技術者専門研修「保存科学課程」  
金属製遺物保存処理実習風景

Training in conservation  
science course

## 文化財保護の国際学術交流

奈良文化財研究所が実施する国際交流・協力事業は、学術共同研究・研究員交流・技術研修・保存修復などであり、JICAなど他機関がおこなう国際協力事業にも協力しています。

2003年度には、次の6件の事業を中心にした国際交流・協力を実施します。①中国社会科学院考古研究所とおこなう「アジアにおける古代都城遺跡の研究と保存に関する研究協力」として、中国陝西省西安市の唐長安城大明宮太液池庭園跡の共同発掘調査、②カンボジアシェムリアップ地域文化財保護開発機構とおこなう「アンコール文化遺産保護共同研究」として、発掘調査を含む西トップ寺院の総合調査研究、③「東アジアにおける生産遺跡の調査研究協力」として、中国河南省文物考古研究所とおこなう河南省鞏義市黄冶唐三彩窯跡に関する共同研究、及び④韓国国立文化財研究所とおこなう古代韓国と日本の金属・瓦生産に関する共同研究、⑤中国遼寧省文物考古研究所とおこなう「中国遼寧省三燕文化の遺物・遺跡に関する研究協力」として、遼西地区の三燕文化遺跡出土金属器の調査、⑥韓国国立文化財研究所とおこなう「古代日本の都城形成過程等に関する調査研究」として、日韓都城の比較研究を実施します。

この他、チリ国イースター島モアイ像を対象とする「苛酷気象条件下の遺跡調査と保存に関する研究」、科学研究費補助金による中国文物研究所・甘肅省博物館他とおこなう「古代中国の石窟・墓室等塑像・壁画の材質・構造解析と保存修復に関する研究」、中国遼寧省文物考古研究所とおこなう「日中古代墳墓副葬品の比較研究」などがあります。

## International Academic Exchanges Related to Cultural Properties Conservation

The National Research Institute for Cultural Properties, Nara, promotes a variety international projects ranging from joint research, exchanges of research personnel, technical training, and the restoration and preservation of ancient sites. In addition, the Institute offers assistance to JICA (Japan International Cooperation Agency) and other organizations in implementing international cooperative projects.

During the 2003 fiscal year, these efforts will focus on the following six of programs cooperation: (1) a garden excavation at the Da Ming Gong Tai Ye Chi garden site of the Tang Dynasty capital, Chang'an, Shaanxi Province in China, carried out in conjunction with the Institute of Archaeology and the Chinese Academy of Social Sciences as part of the "Cooperative Research related to the Preservation and Study of Ancient Capitals in Asia"; (2) a comprehensive investigation, including excavation, of the West Top Temple in Cambodia, as part of the "Cooperative Research Related to the Preservation of Angkor Cultural Heritage" in conjunction with the Authority for the Protection and Management of Angkor and the Region of Siem Reap; (3) an investigation of glazed pottery kiln sites in Gongyi City in Henan Province, China, in conjunction with the Archaeological Institute of Henan Province; (4) a joint research project on metal and roof tile production in ancient Korea and Japan, carried out in conjunction with the National Research Institute for Cultural Properties, Korea; (5) a joint research project on ancient artifacts and sites representing the Sanyan Culture in Liaoning Province, China, carried out in conjunction with the Archaeological Institute of Liaoning Province; and (6) a comparative study of the process of formation of ancient capitals in Japan and Korea, as part of the "Cooperative Research on the Formation of Capital Sites in Ancient Japan," in conjunction with the National Research Institute for Cultural Properties, Korea.

Other international projects include the "Investigation and Preservation of Ancient Sites under Harsh Climates," dealing with the Moais on Easter Island, Chile; the "Study of Materials, Structural Analysis, Preservation, and Restoration of Statues and Wall Paintings in Ancient Cave Shrines and Funeral Chambers in China," carried out with the Archaeological Institute of China and Gansu Province Museum under a grant-in-aid offered by the Ministry of Education, Culture, Sports, Science and Technology for scientific research; and the "Comparative Study of Burial Goods Found in Ancient Tombs in Japan and China," carried out in conjunction with the Archaeological Institute of Liaoning Province.



鞏義市黄冶 唐三彩窯出土品の調査

Investigation of the articles unearthed from the three-color glazed pottery kiln sites in Gongyi City, China



唐長安城大明宮 基準点測量

Control point survey at the Da Ming Gong site of the Tang Dynasty capital, Chang'an, China



アンコール遺跡群 タニ窯跡群A6号窯の調査

Investigation of the A6 Kiln at the Tani kiln sites in the Angkor complex



## 調査研究成果の普及活動

## Publicizing the Results of Research Activities

研究所には公開施設として平城宮跡資料館、飛鳥藤原宮跡発掘調査部展示室、飛鳥資料館があります。

The Institute publicly displays its research and survey results through the Nara Palace Site Museum, the Exhibition Hall of the Department of the Asuka/Fujiwara Palace Site Investigations, and the Asuka Historical Museum.

春・秋には研究職員が調査研究成果を発表する公開講演会を開催し、飛鳥資料館では企画展示に關係して内外の講師による講演会を催しています。

Every spring and autumn, the Institute also organizes public lectures in which its researchers present the results of their investigations and surveys. The Asuka Historical Museum also invites specialists, from both within the Institute and from the outside, to give lectures in association with special exhibitions of the museum.

平城宮跡発掘調査部および飛鳥藤原宮跡発掘調査部で実施する発掘調査では、現地説明会を開催し、成果を発表しています。

Upon every major excavation work, the two Investigative Departments present public site viewings for those interested in ancient history.

調査研究成果を公表する刊行物には、学報・史料・紀要・基準資料・飛鳥資料館図録・埋蔵文化財ニュース等があります。

Publications issued by the Institute making these research and survey results publicly available include its academic journal, annual reports, compendia of historical materials and other basic data, catalogs of exhibitions at the Asuka Historical Museum, and a newsletter on issues related to buried cultural properties.



## 奈良文化財研究所のホームページ

http://www.nabunken.jp

研究所のホームページでは、公開講演会、発掘調査現地説明会等の各種行事の開催情報を提供するとともに、公開講演会、現地説明会、記者発表等の資料を掲載し、できる限り最新の文化財情報の提供に努めています。

また、公開データベースとして木簡、全国遺跡、古代・地方官衙・居宅・寺院関係遺跡文献、発掘庭園、所蔵図書の各データベースを公開しています。

さらに平城宮跡内の各施設や飛鳥資料館等の公開施設についても案内情報等の提供をおこなっています。

## Nara Cultural Properties Research Institute Home Page

http://www.nabunken.jp

The Institute's Home Page strives to provide the latest possible data on cultural properties by listing information on various events such as public lectures and public site viewings, and in addition, by posting the contents of materials prepared for such public lectures, site viewings, press releases, etc.

Also, public access is provided to a variety of databases, including databases on wooden documents (mokkan), on archaeological sites throughout Japan, on literature related to ancient government offices, residential sites and temples, on excavated garden sites, and on the holdings of the Institute's library.

Further, information is provided about various public facilities on the grounds of the ancient Nara palace site, plus the Asuka Historic Museum.

