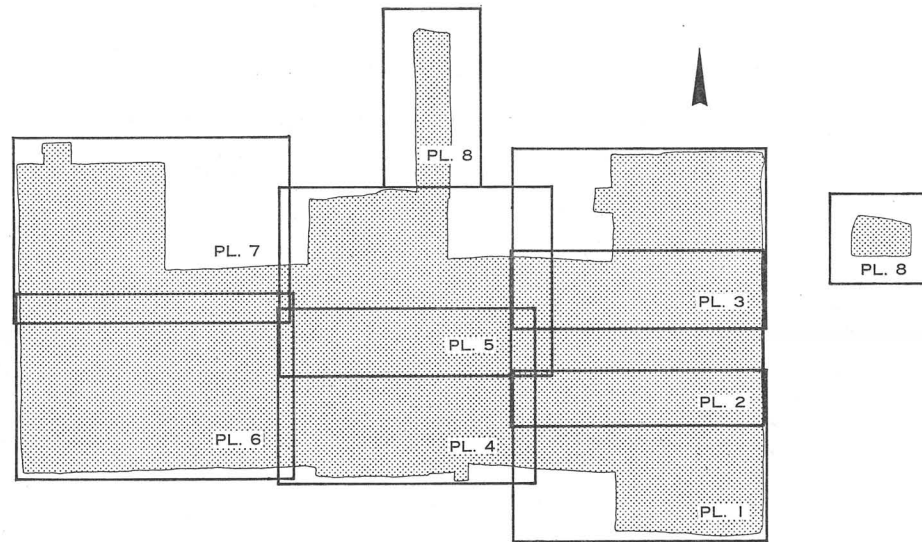
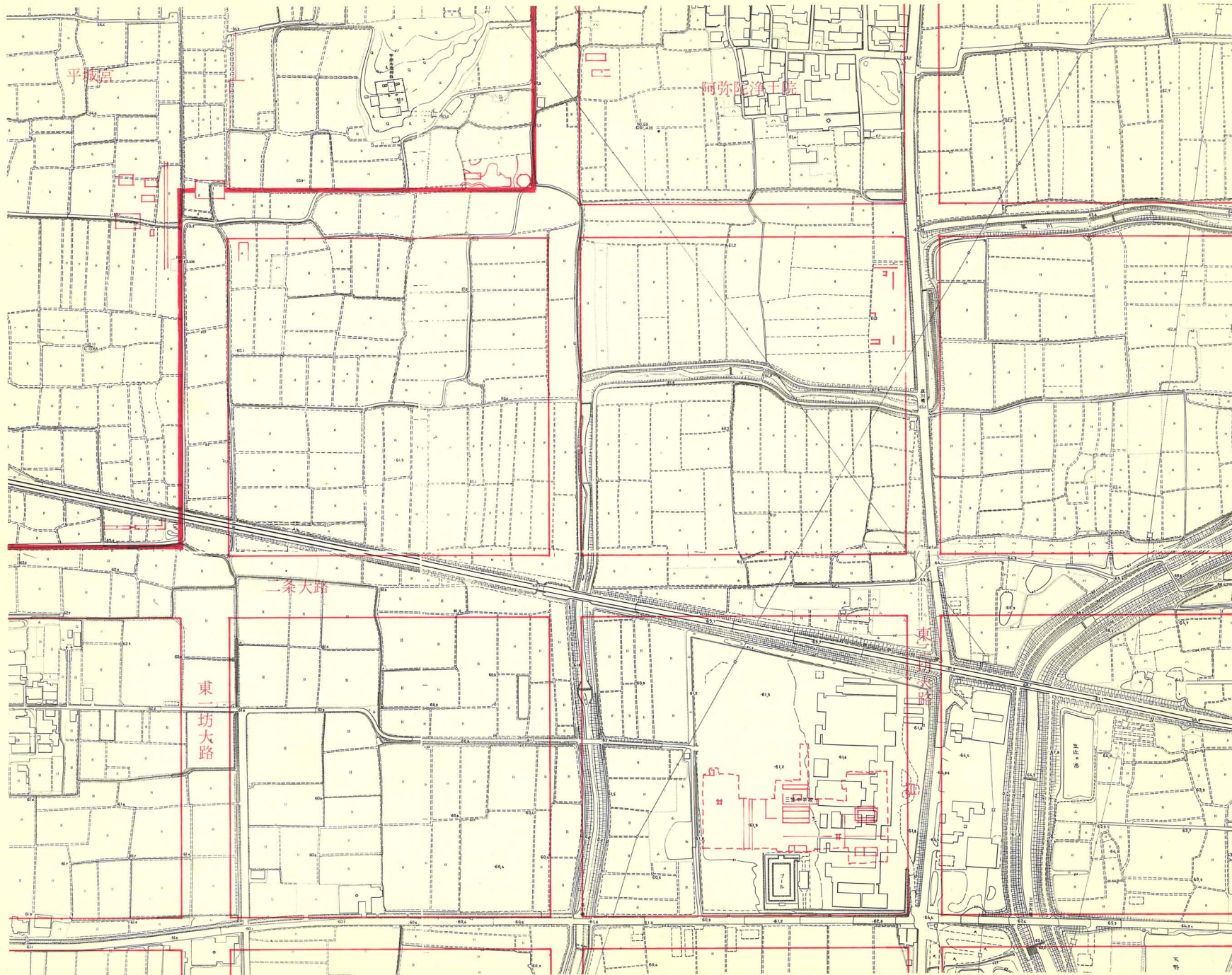


図 版

凡 例

1. 遺構には一連番号を付して、その前にSA：築地・柵・土塁，
SB：建物，SC：廊，SD：溝，SK：土城，SX：その他，
SZ：不明などの分類記号を標記する。
2. 遺構の寸法数字はm単位である。
3. 遺構の実測は国土方眼座標にしたがい、高さの基準は標高である。
4. 遺構実測図は対応する図版番号であらわす。
5. 遺構の図面，図版は下図のように分割した。





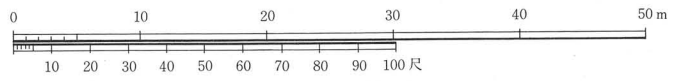
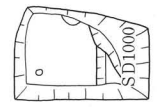
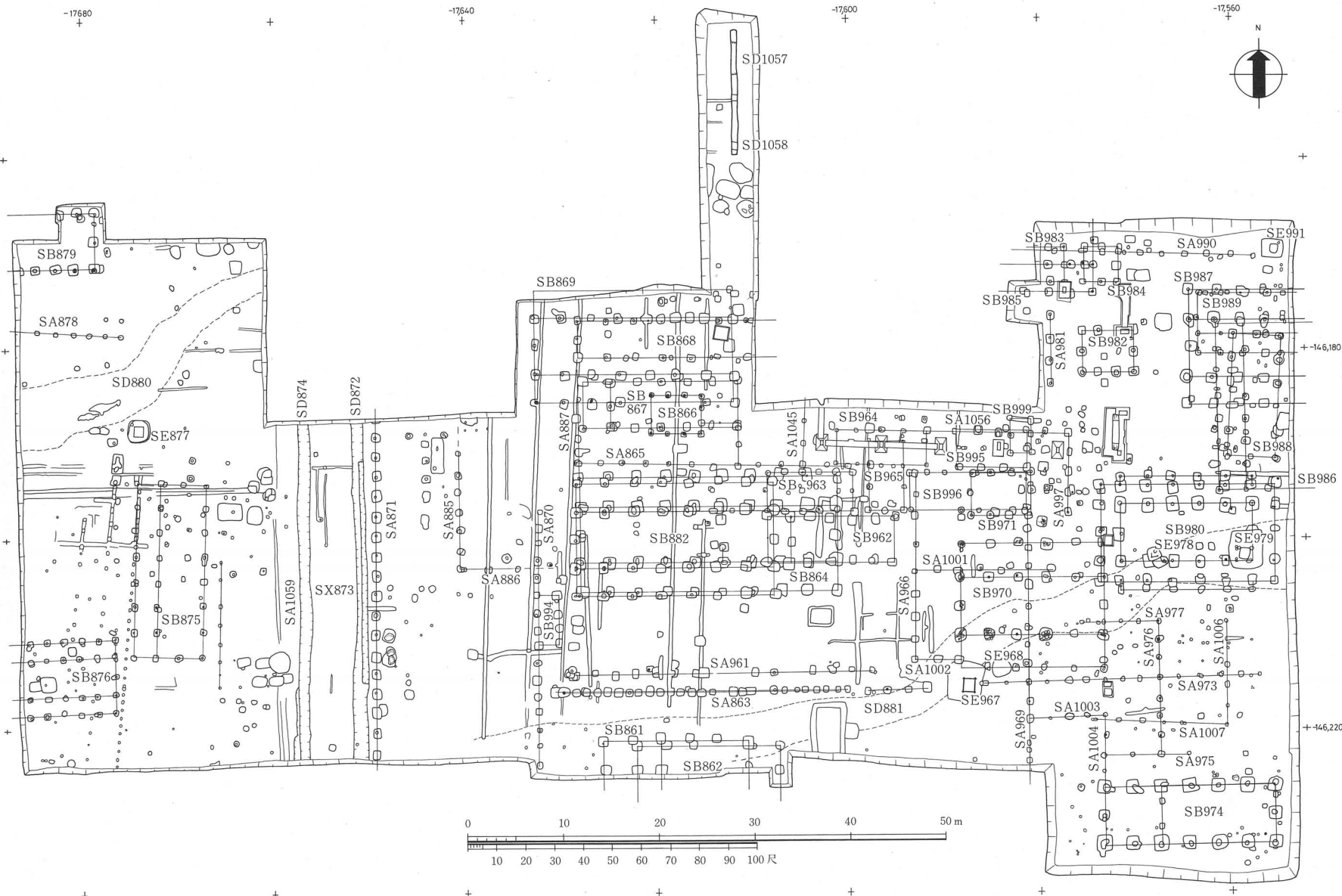


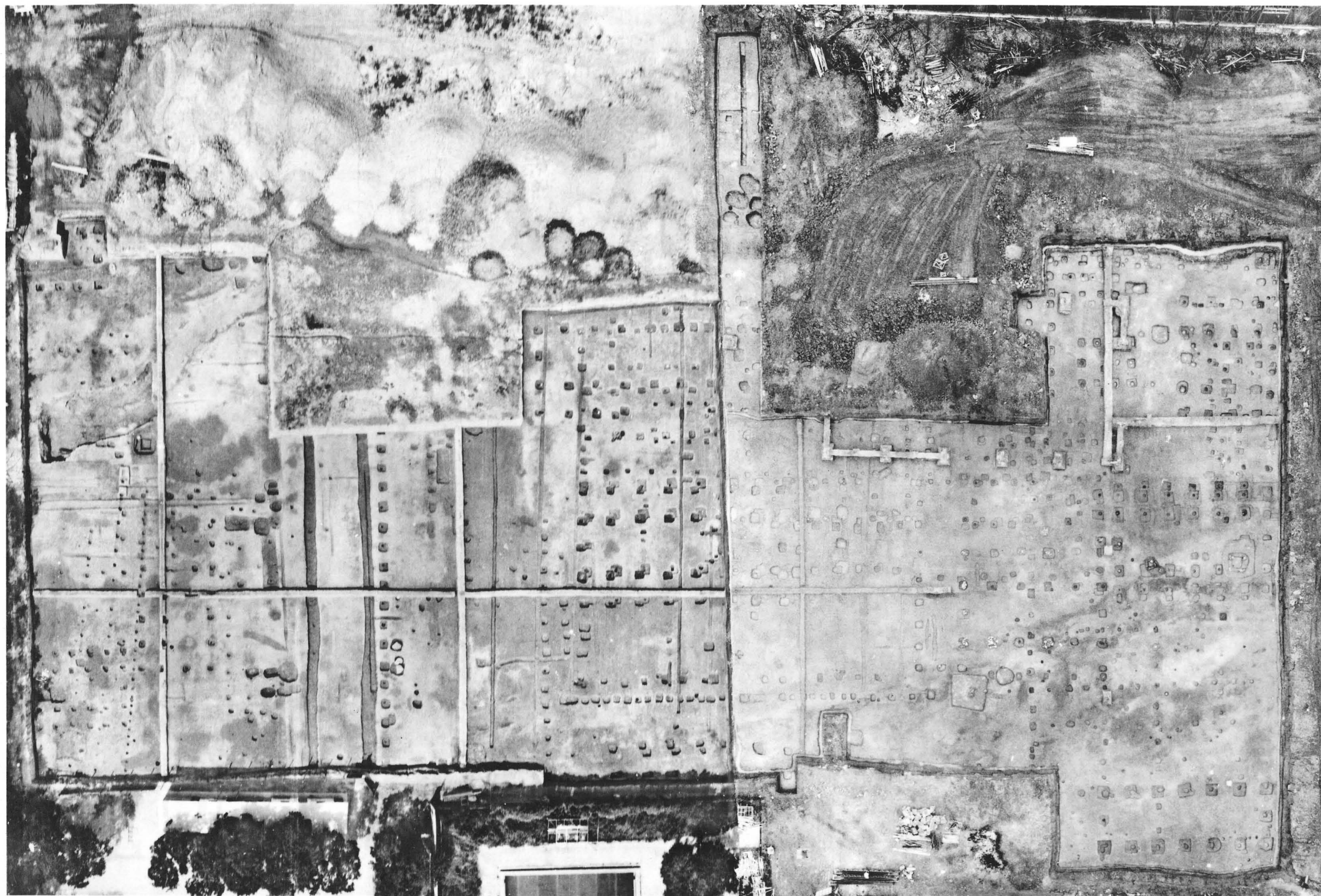
-17680

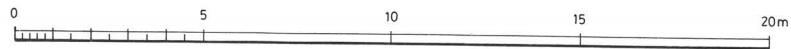
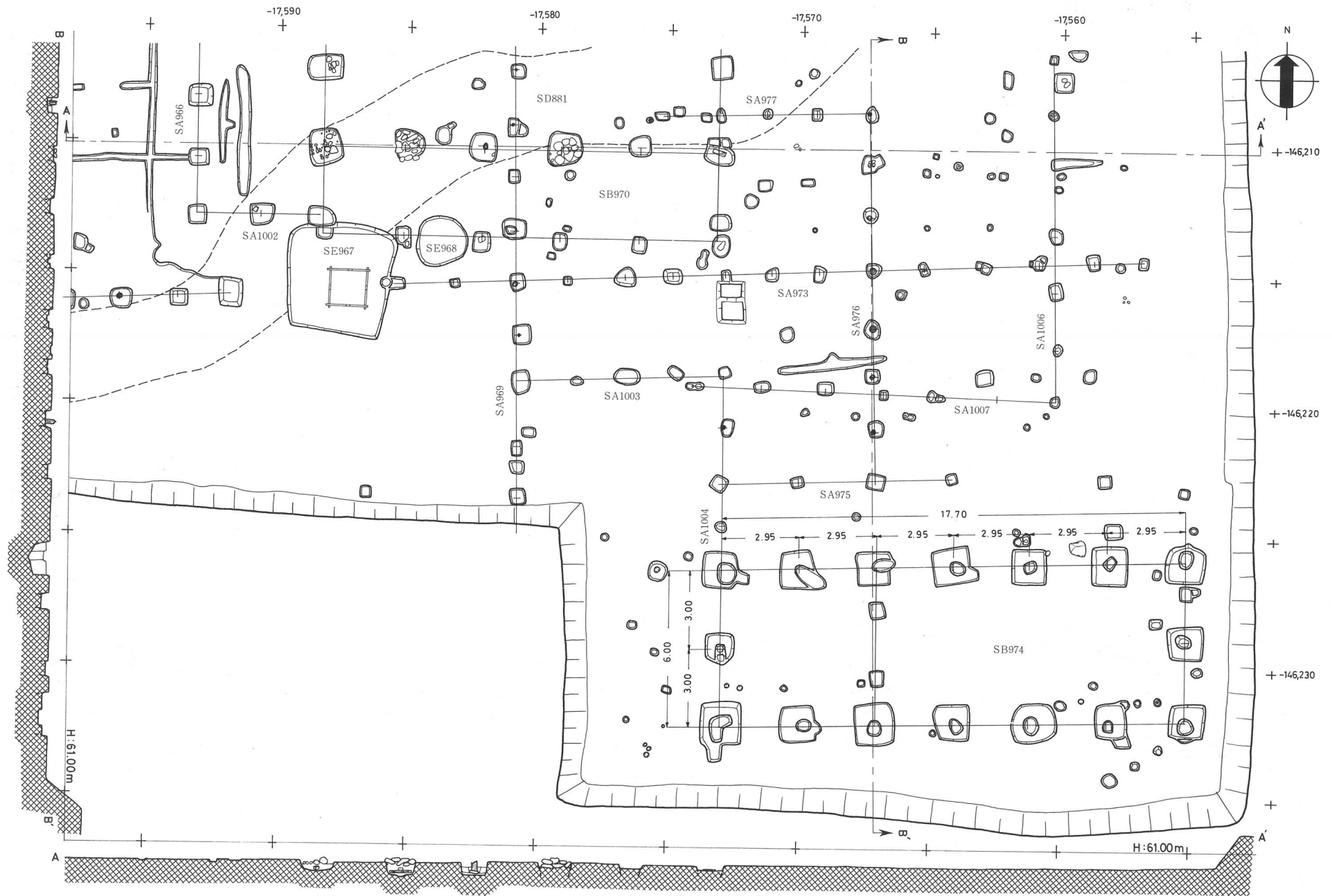
-17640

-17600

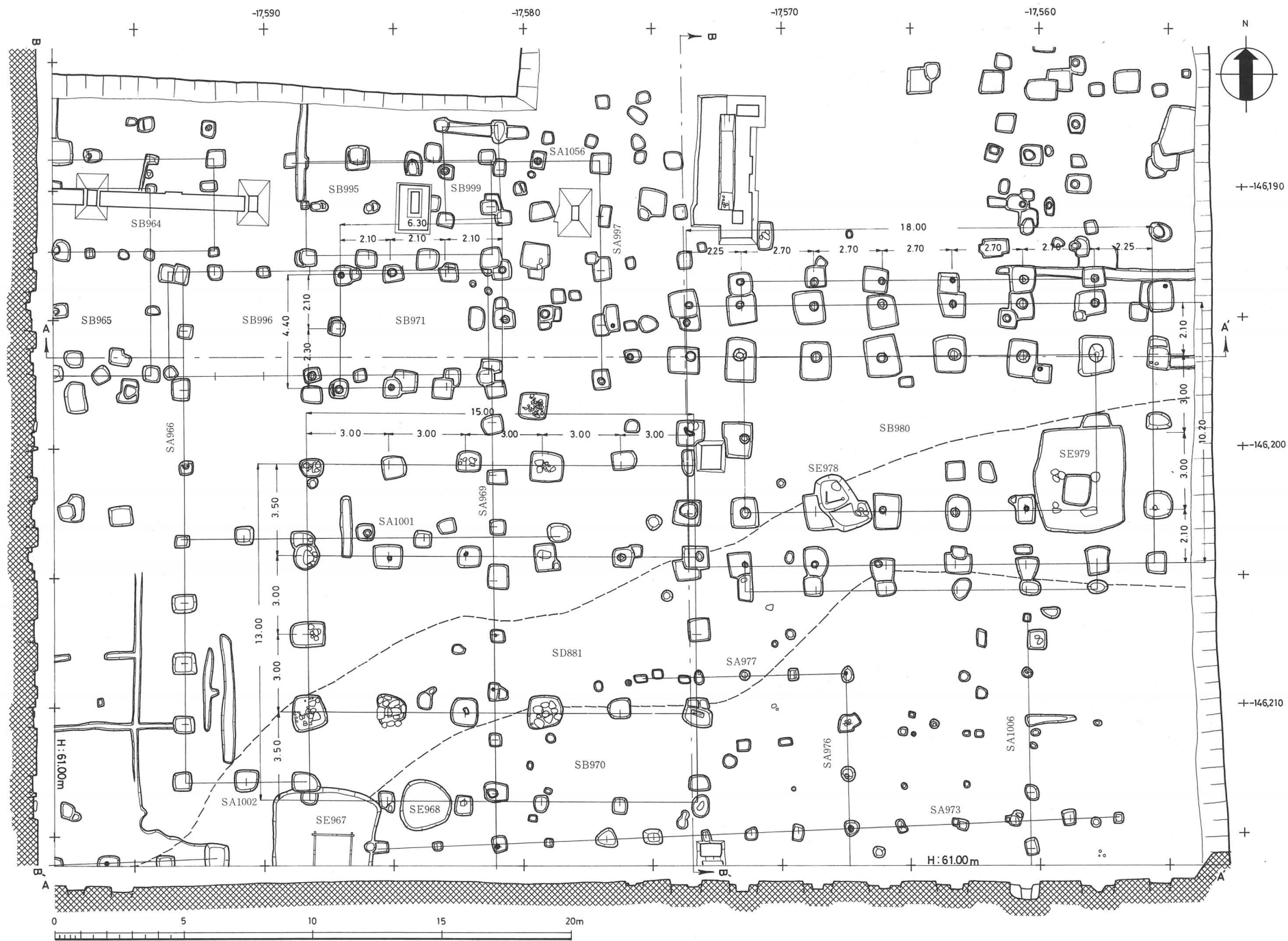
-17560

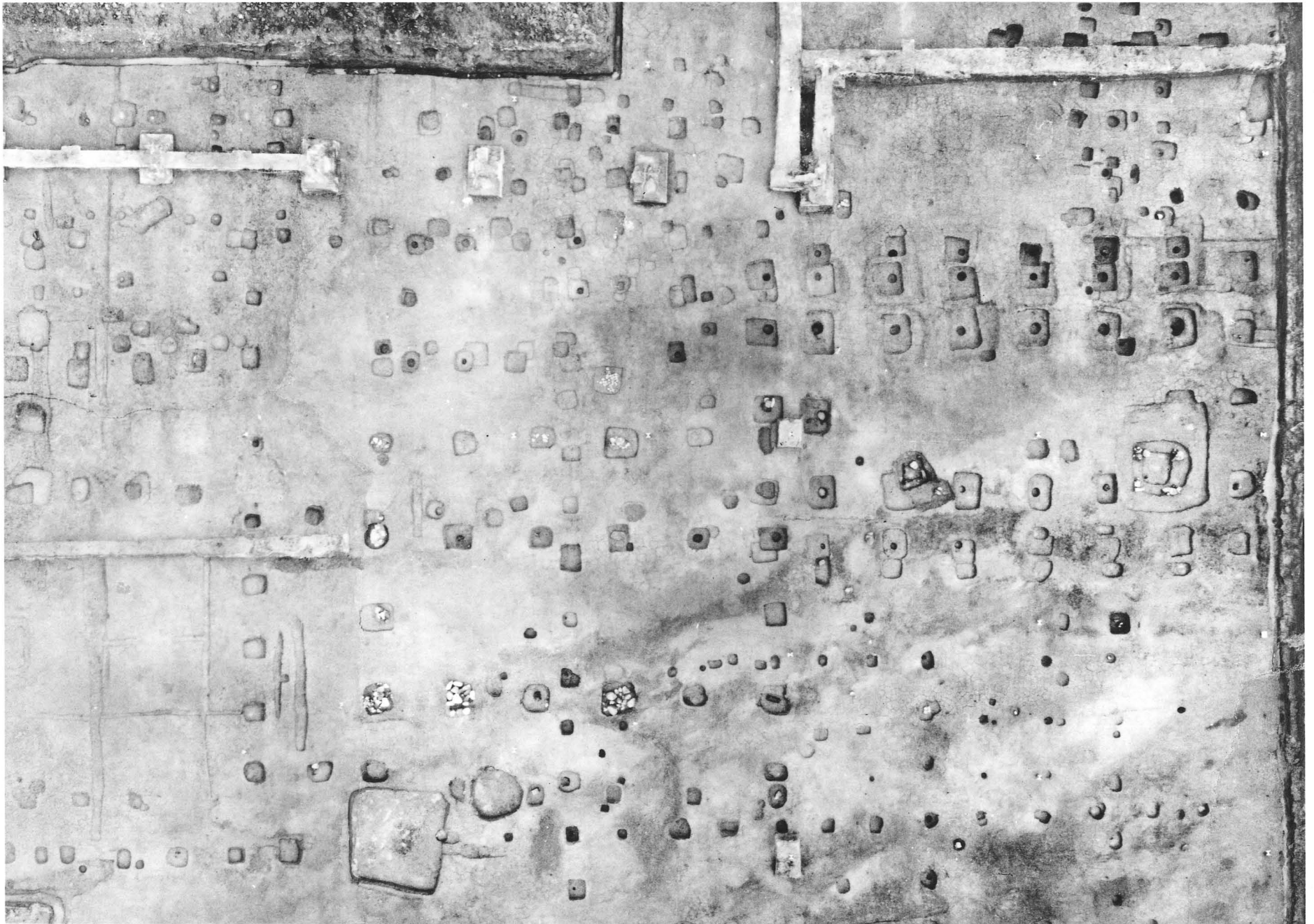


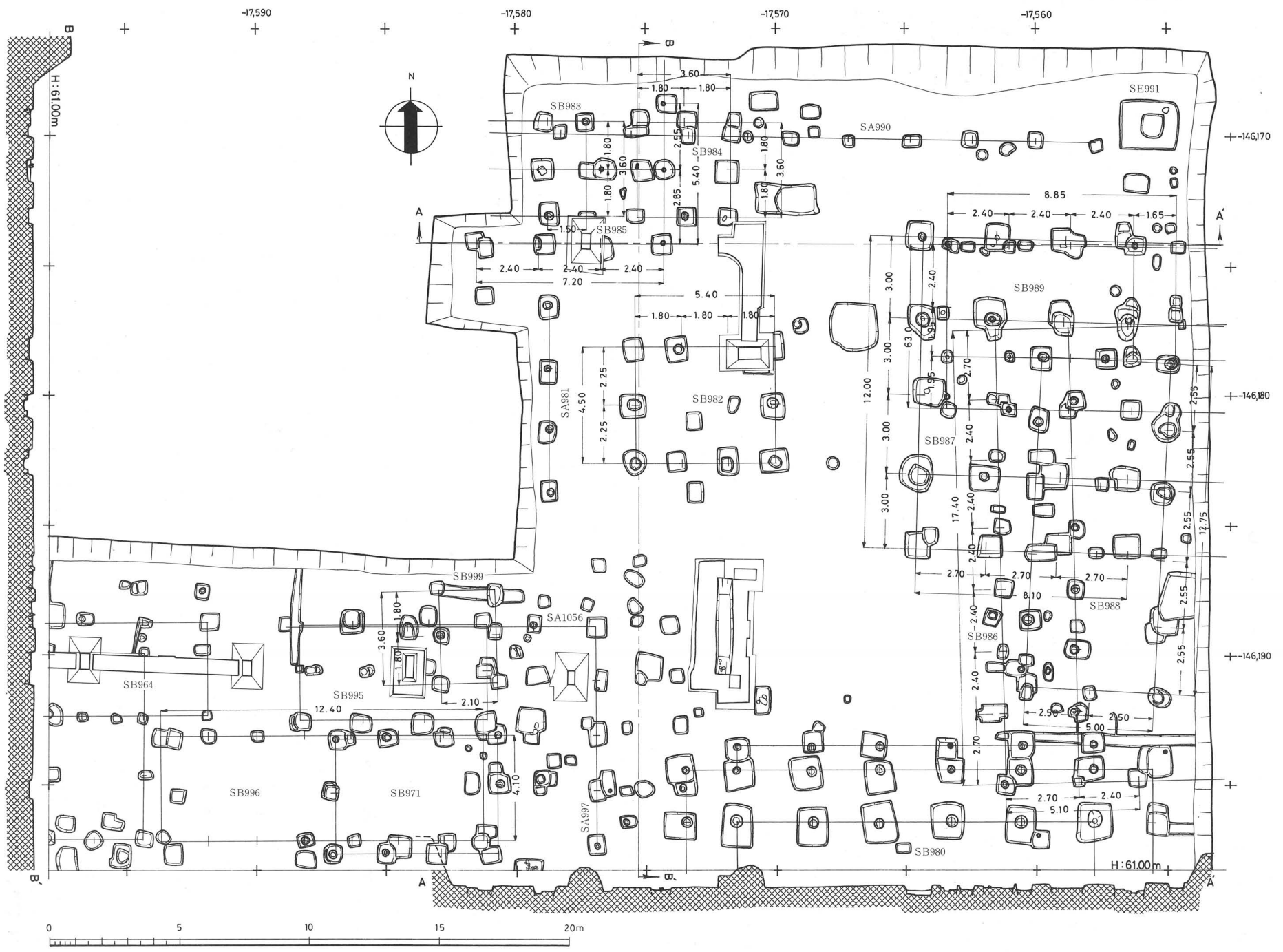


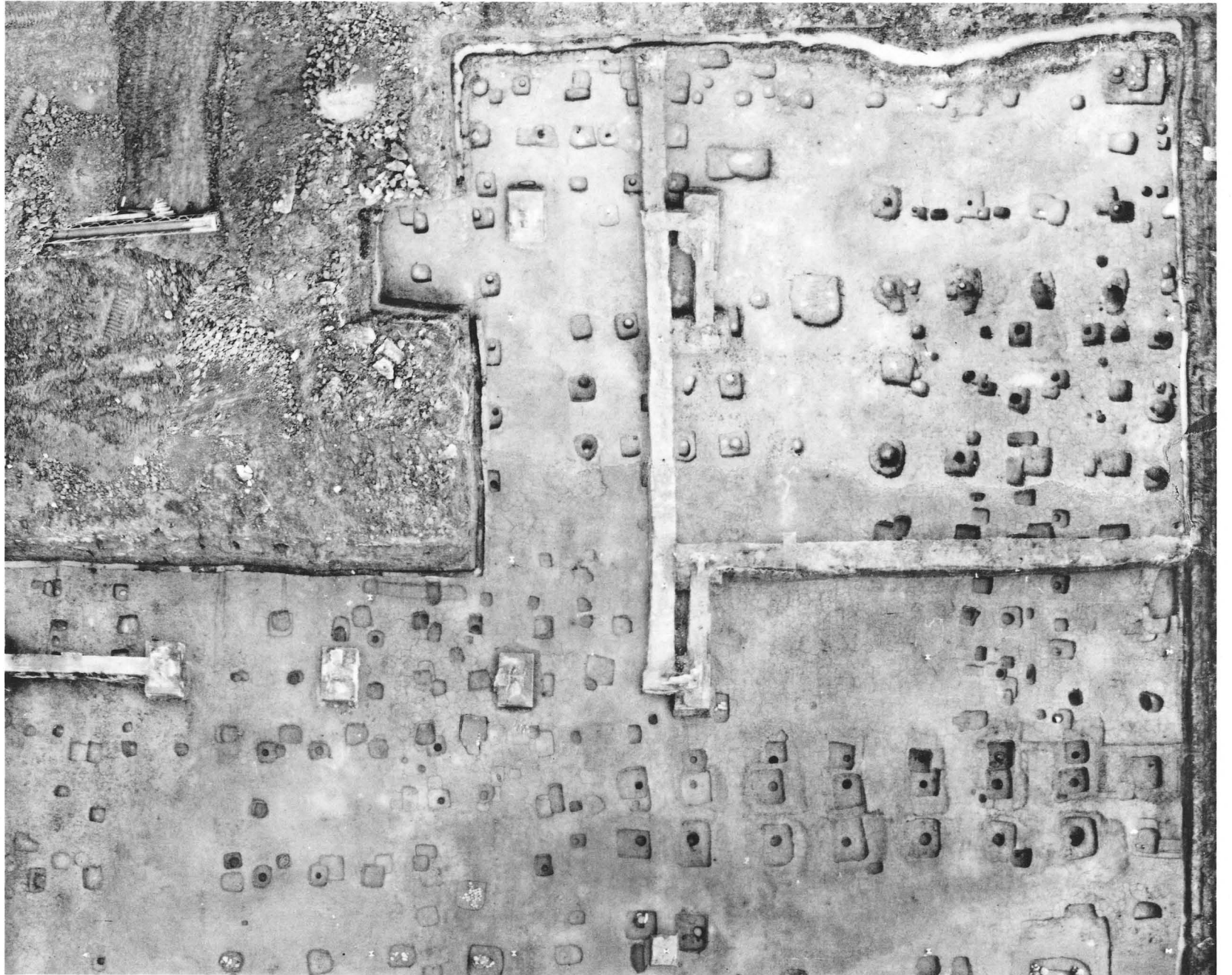


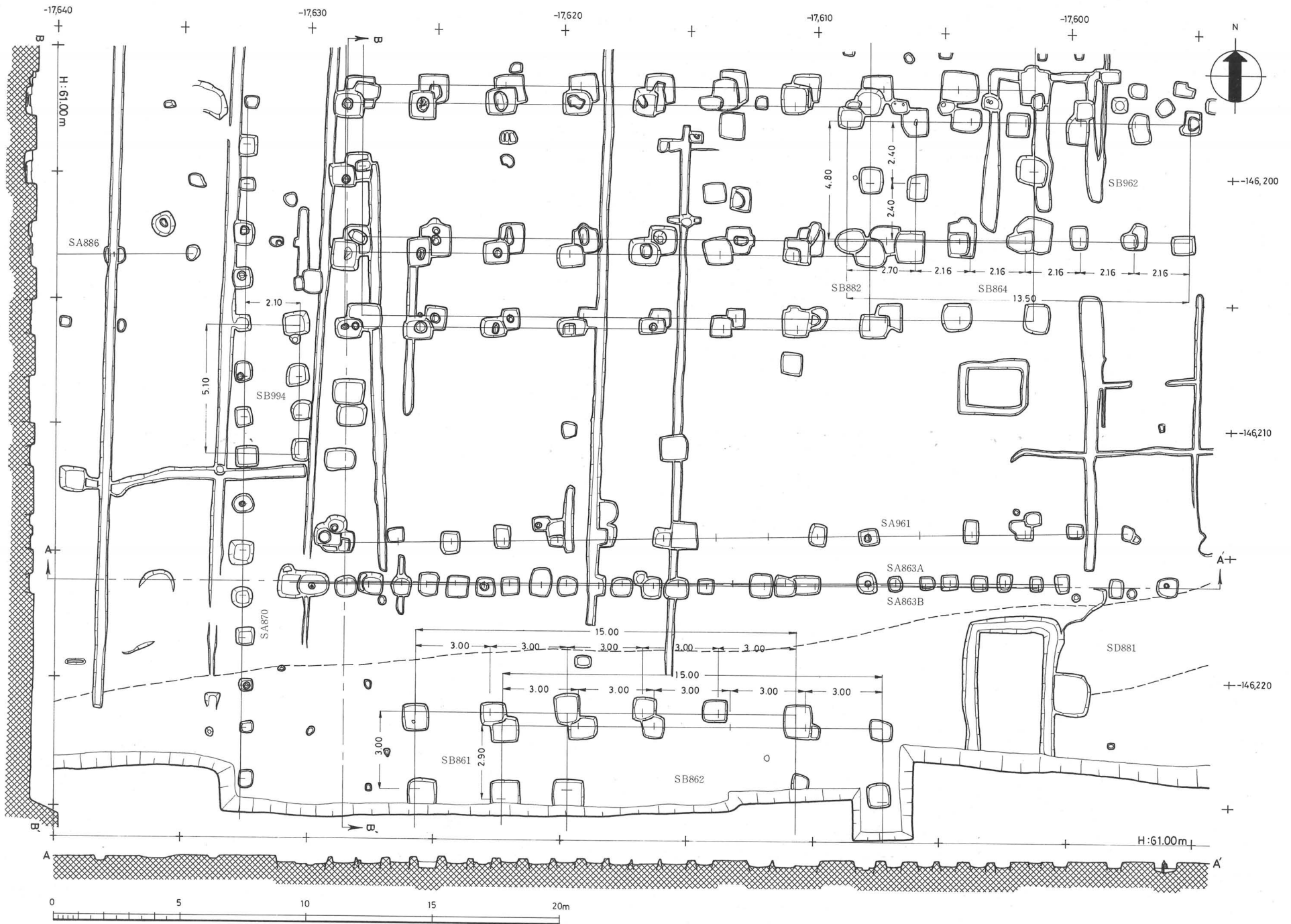


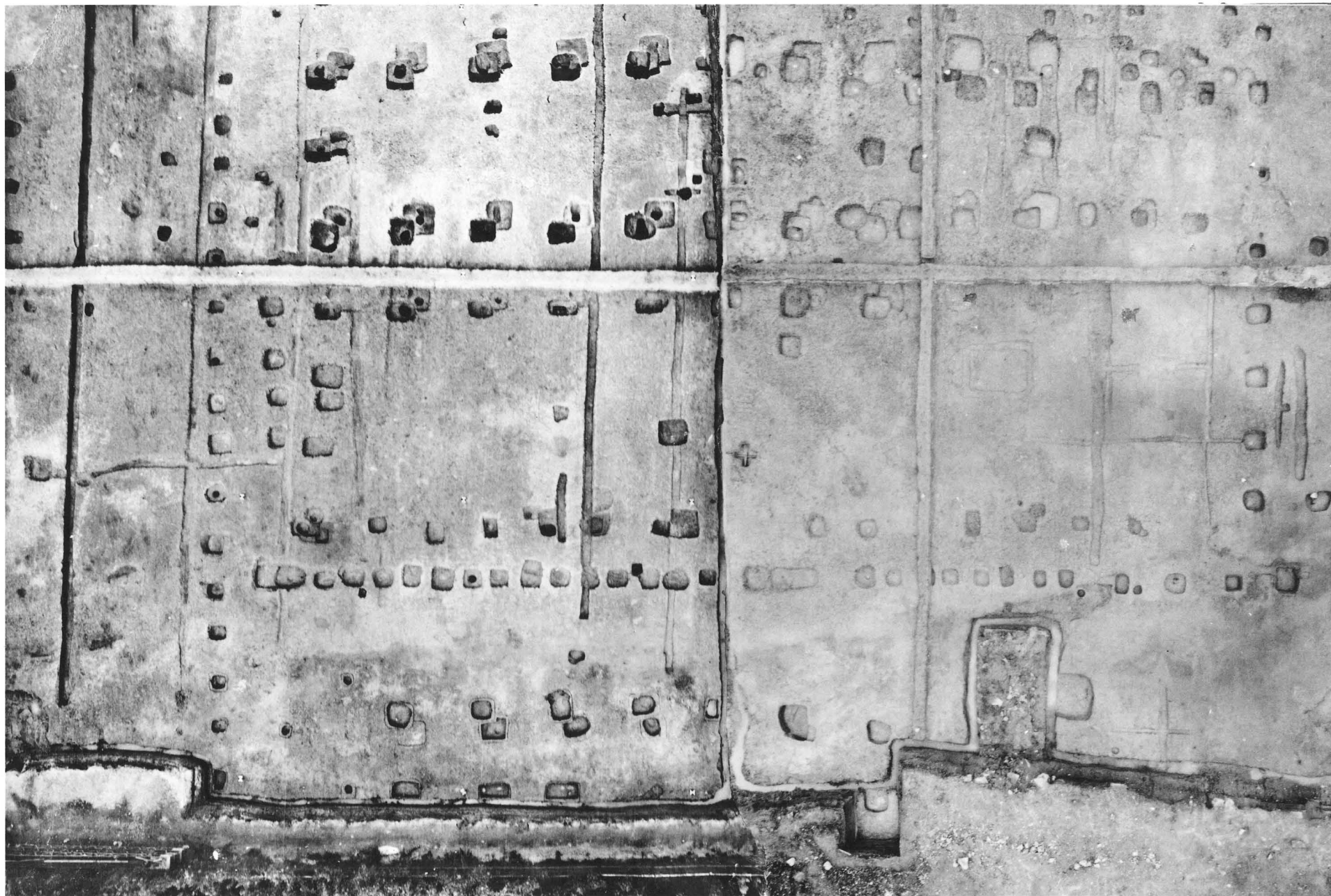


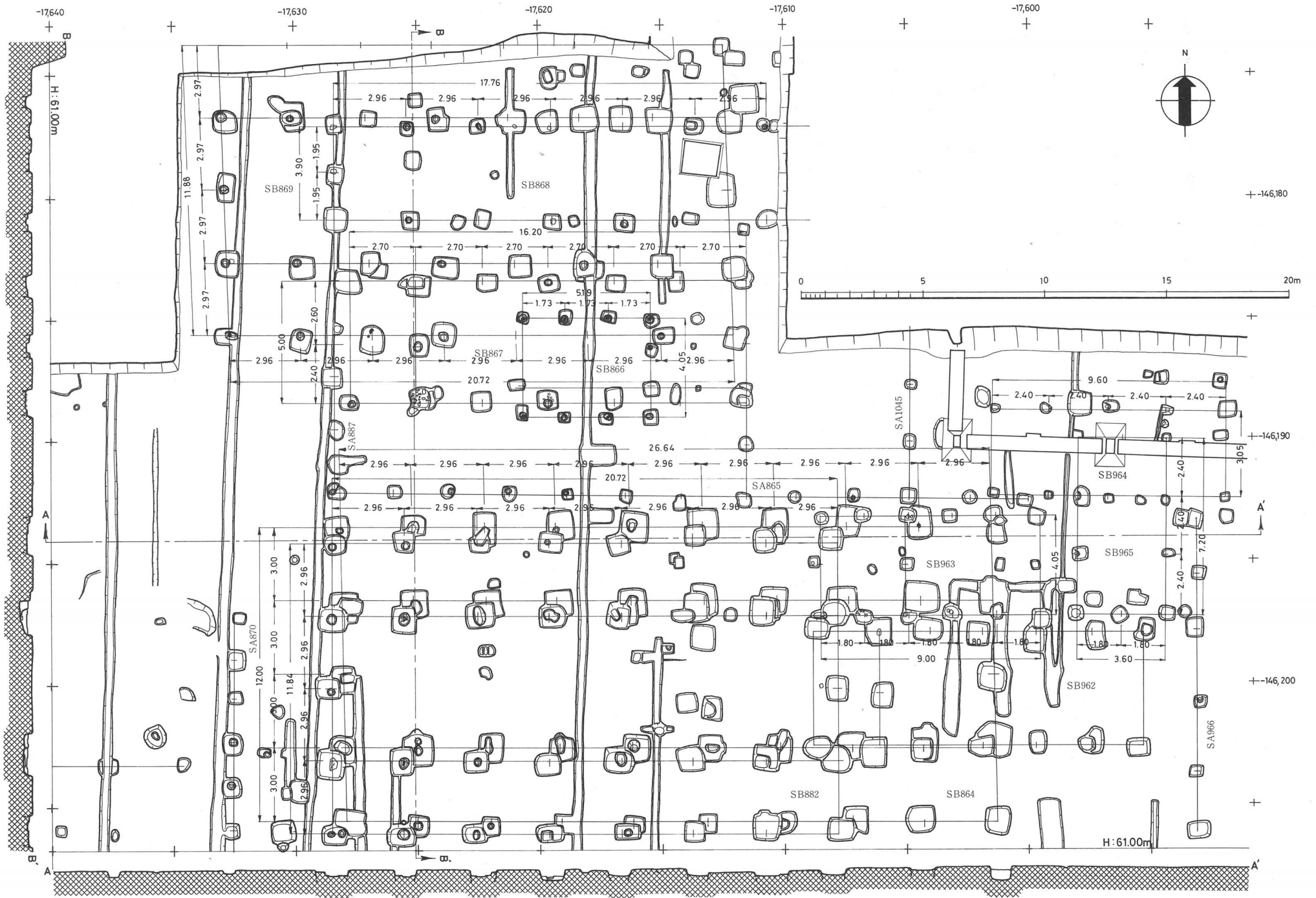


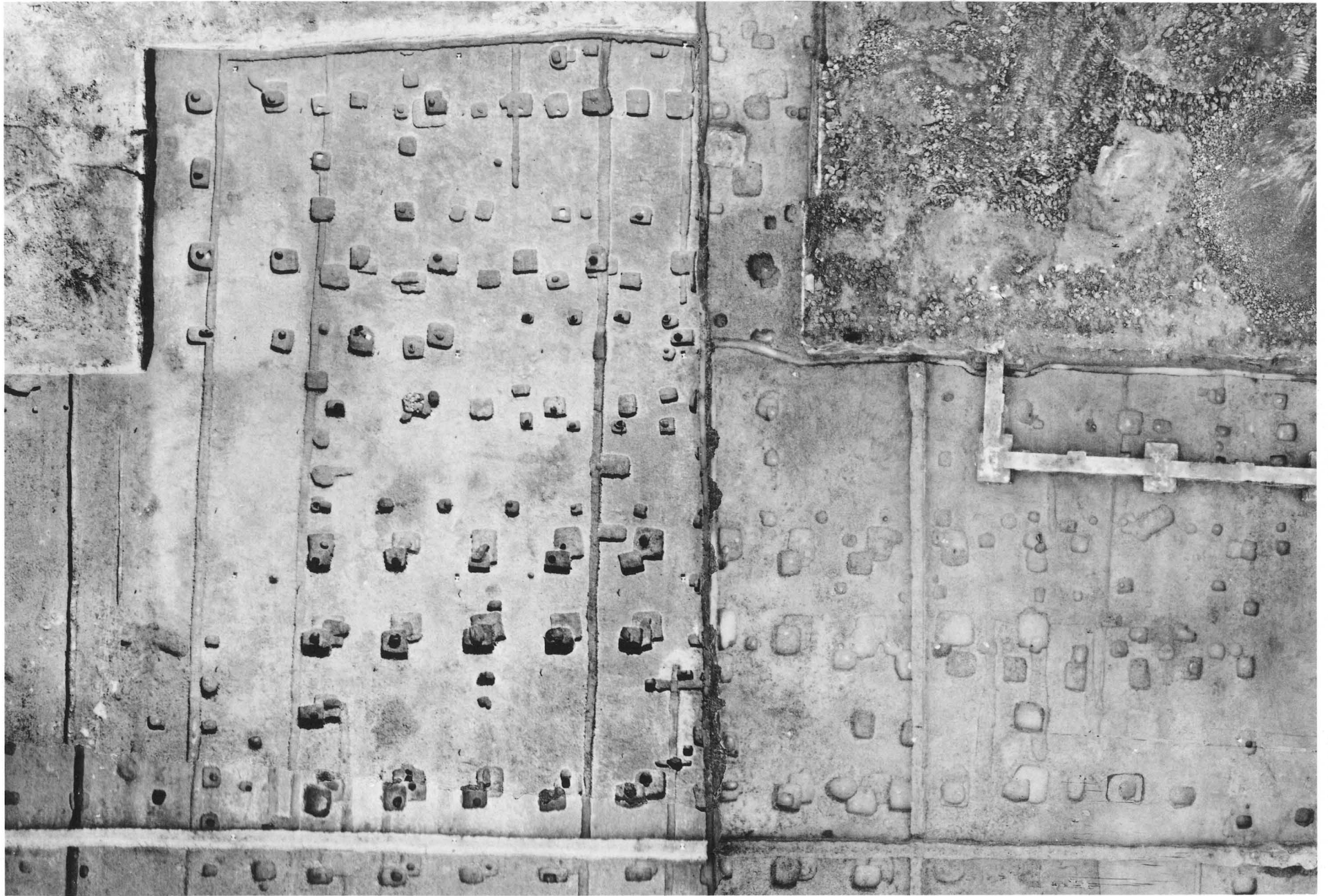




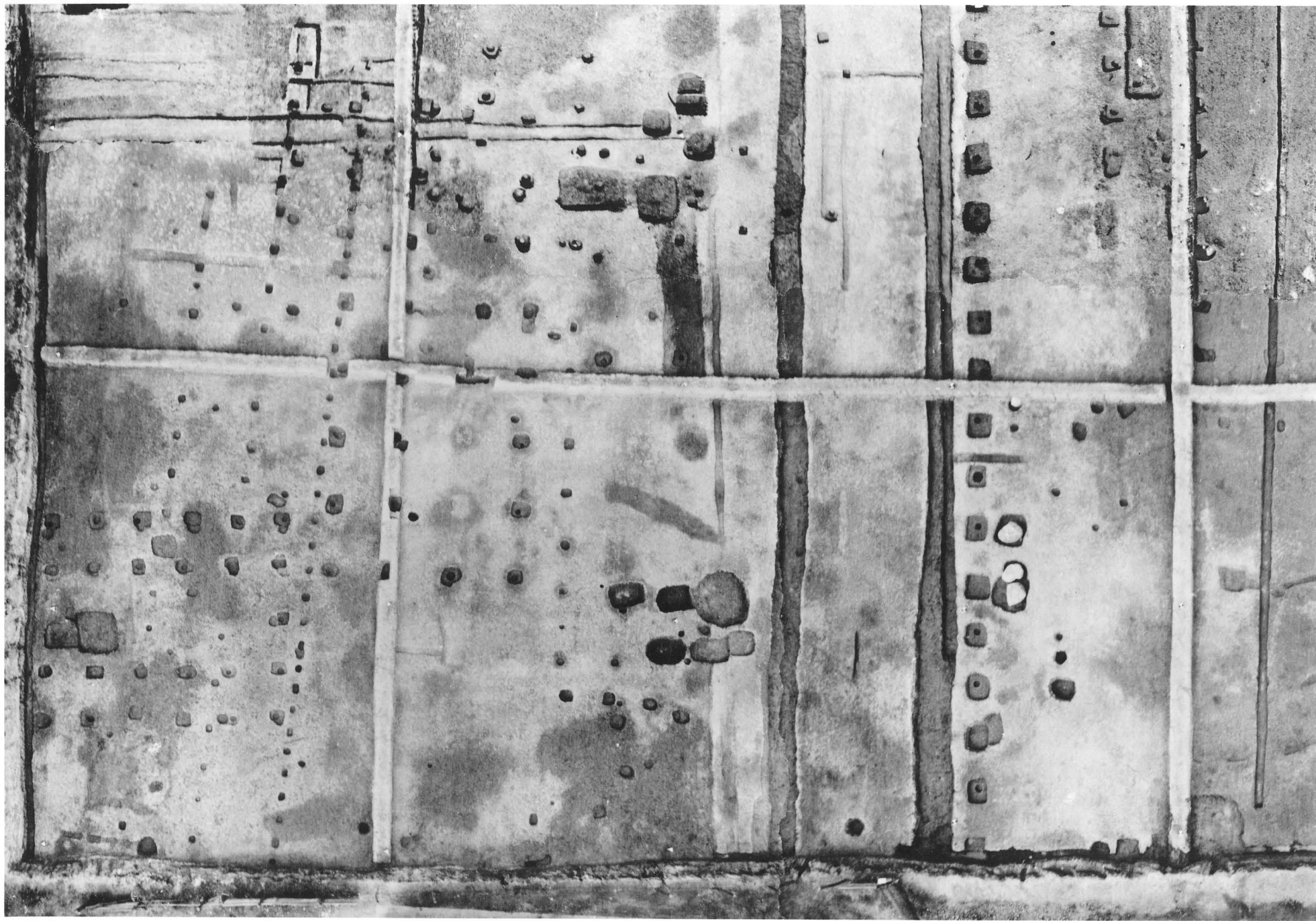


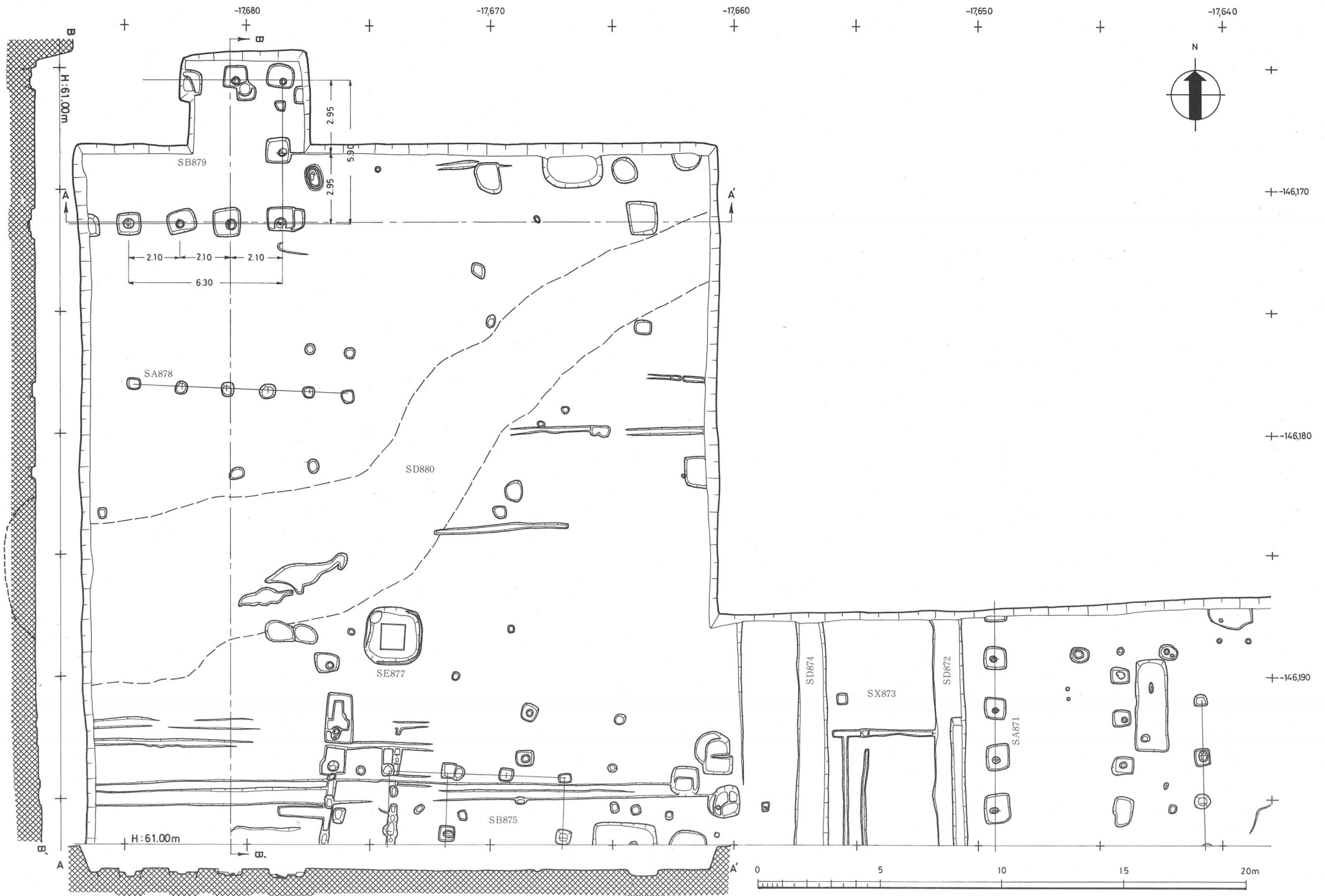


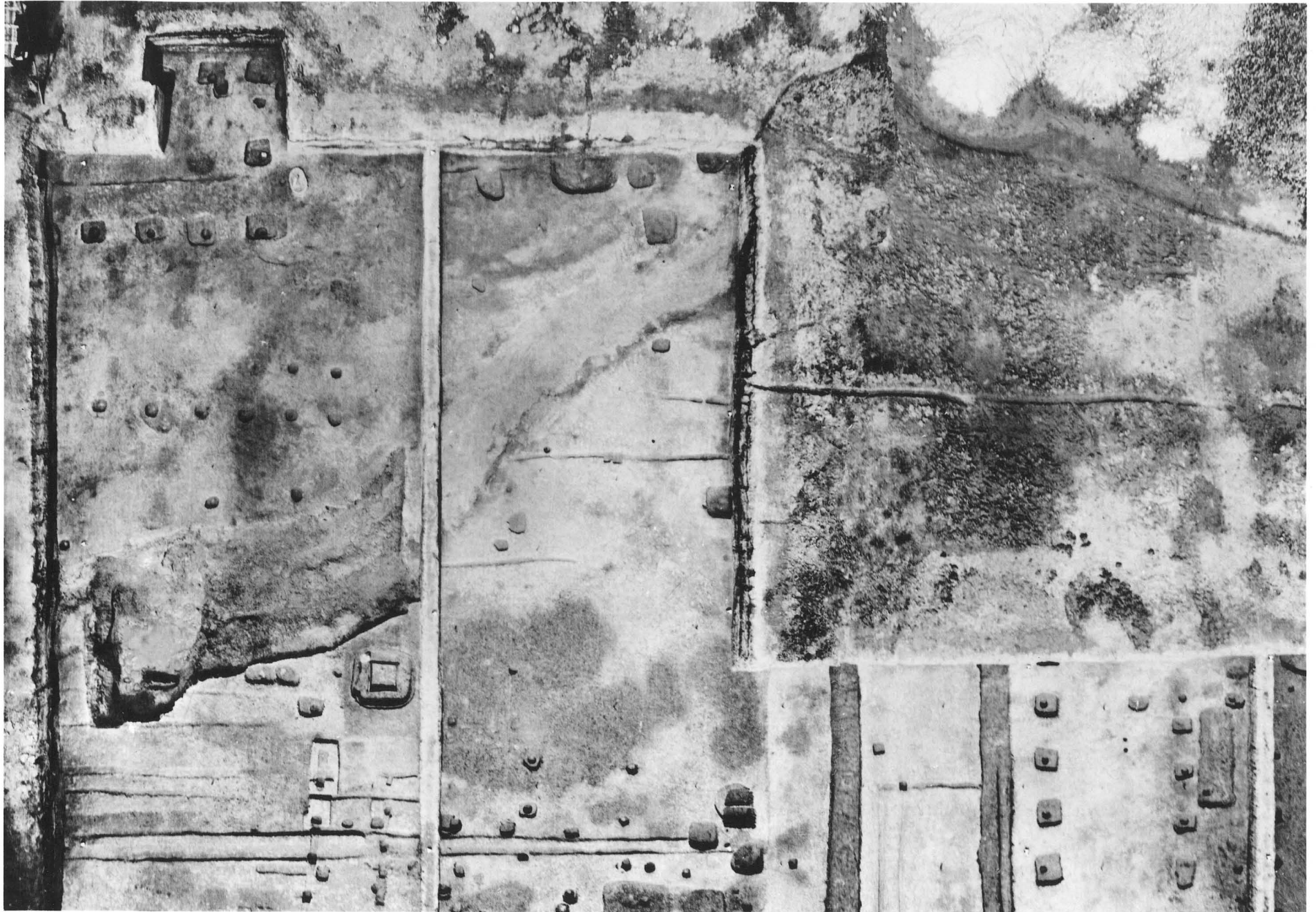










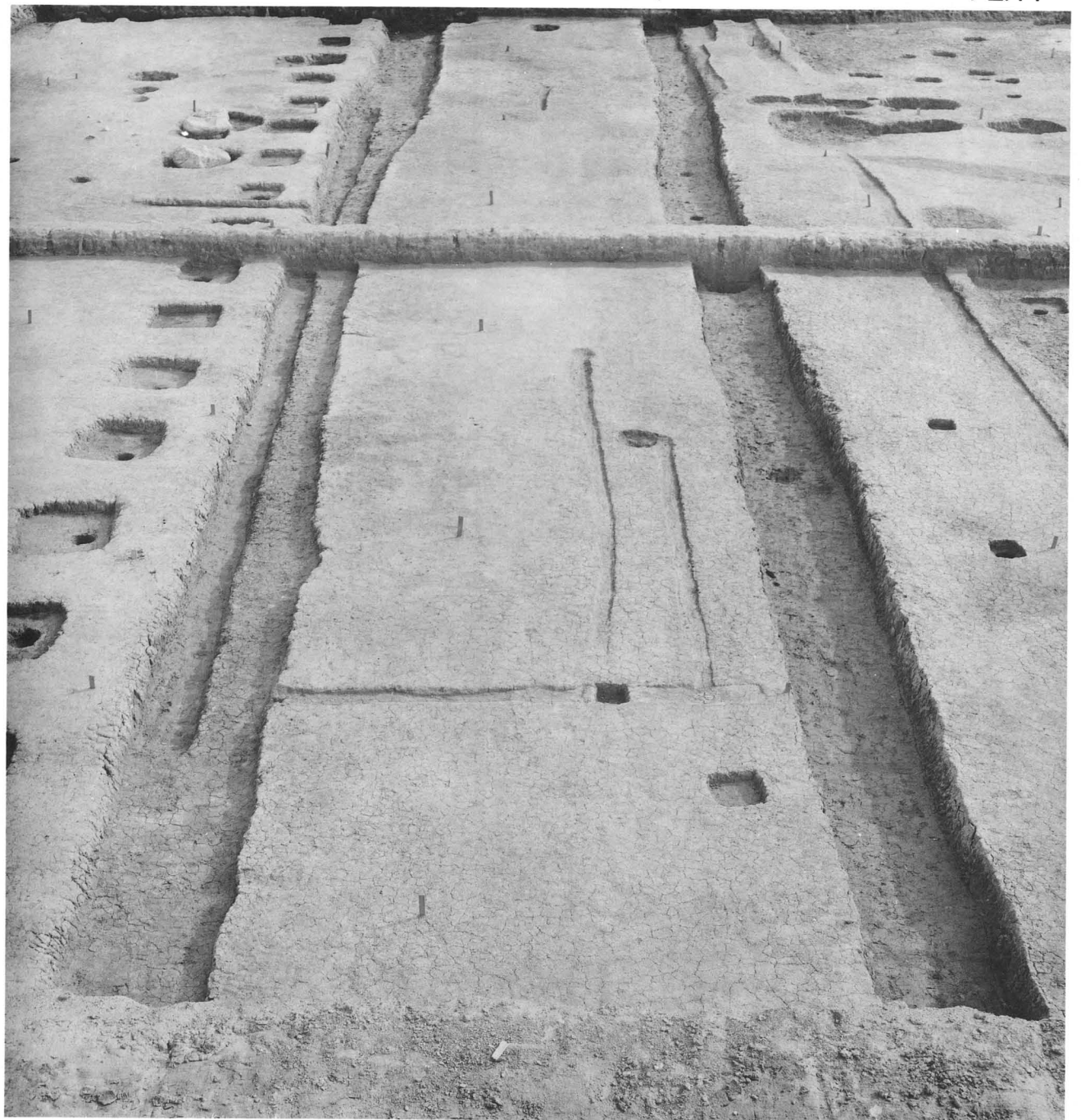




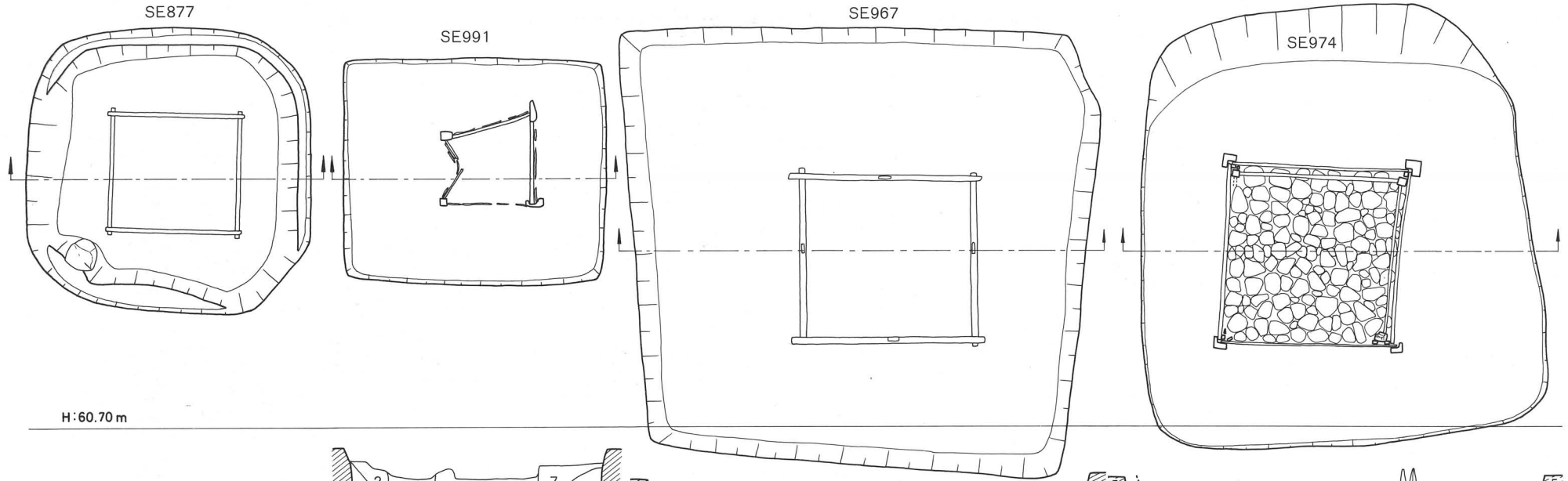
1 二坊大路西側溝(SD1000)北から 2・3 東西小路(SX1060)北から



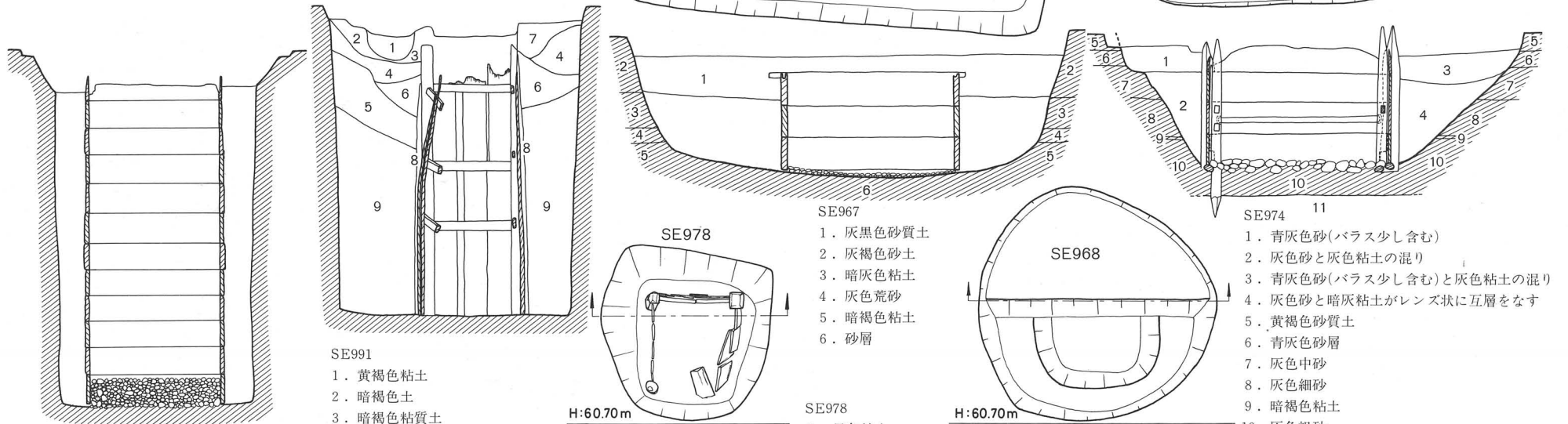
2 SD881 東から



1 南北小路(SX873) 北から



H:60.70m

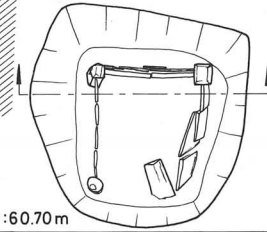


SE991

1. 黄褐色粘土
2. 暗褐色土
3. 暗褐色粘質土
4. 灰青色砂質土
5. 茶褐色粘土
6. 灰黑色砂(粘土混り)
7. 暗褐色粘質土
8. 暗灰色粘土
9. 黄灰色砂質土

H:60.70m

SE978



SE967

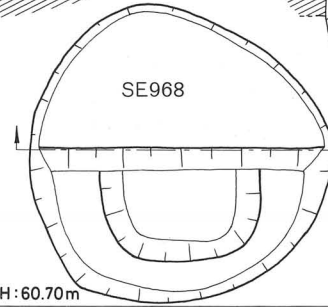
1. 灰黑色砂質土
2. 灰褐色砂土
3. 暗灰色粘土
4. 灰色荒砂
5. 暗褐色粘土
6. 砂層

SE978

1. 黒色粘土
2. 灰色粘土と黒色粘土の混り(バラス含む)
3. 青灰色粘土
4. 黒粘土
5. 灰黑色砂
6. 黒褐色粘土
7. 黒砂
8. 黒砂礫

H:60.70m

SE968

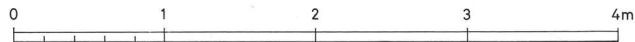


SE974 11

1. 青灰色砂(バラス少し含む)
2. 灰色砂と灰色粘土の混り
3. 青灰色砂(バラス少し含む)と灰色粘土の混り
4. 灰色砂と暗灰色粘土がレンズ状に互層をなす
5. 黄褐色砂質土
6. 青灰色砂層
7. 灰色中砂
8. 灰色細砂
9. 暗褐色粘土
10. 灰色粗砂
11. 灰褐色粘土

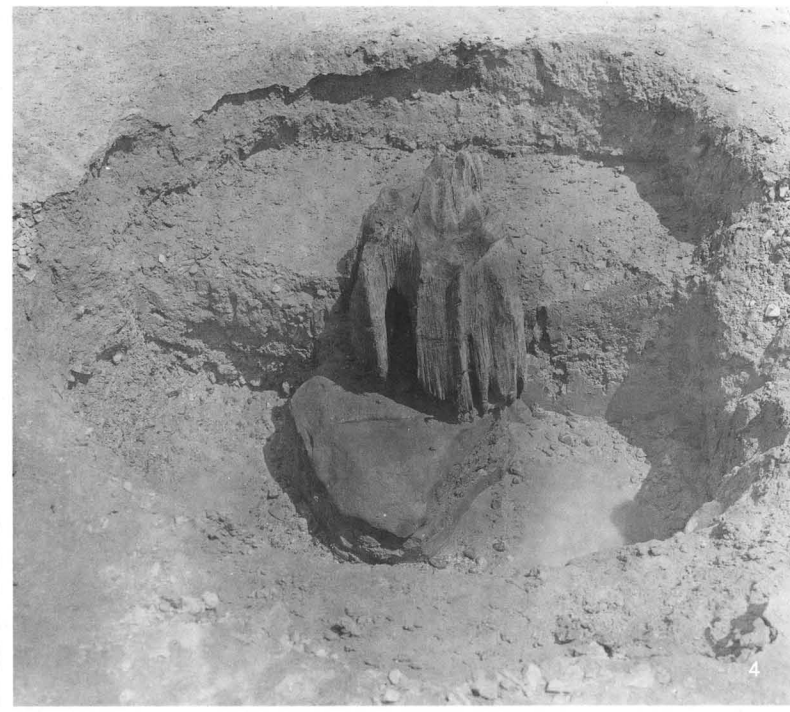
SE968

1. 暗青灰色砂混り粘土(黒褐色粘土のブロックを含む、若干礫混り)
2. 暗灰色砂
3. 黒褐色粘土
4. 暗灰色粗砂
5. 暗褐色粘土





1 SE979 北から 2 SE967 北から 3 SE877 南から



- 1 SB864
- SB882 南から
- 2 SB869 南から
- 3 SB970 西から
- 4 SB970 南から



6316—G
6710—C



6282—G
6721—K



6716—B



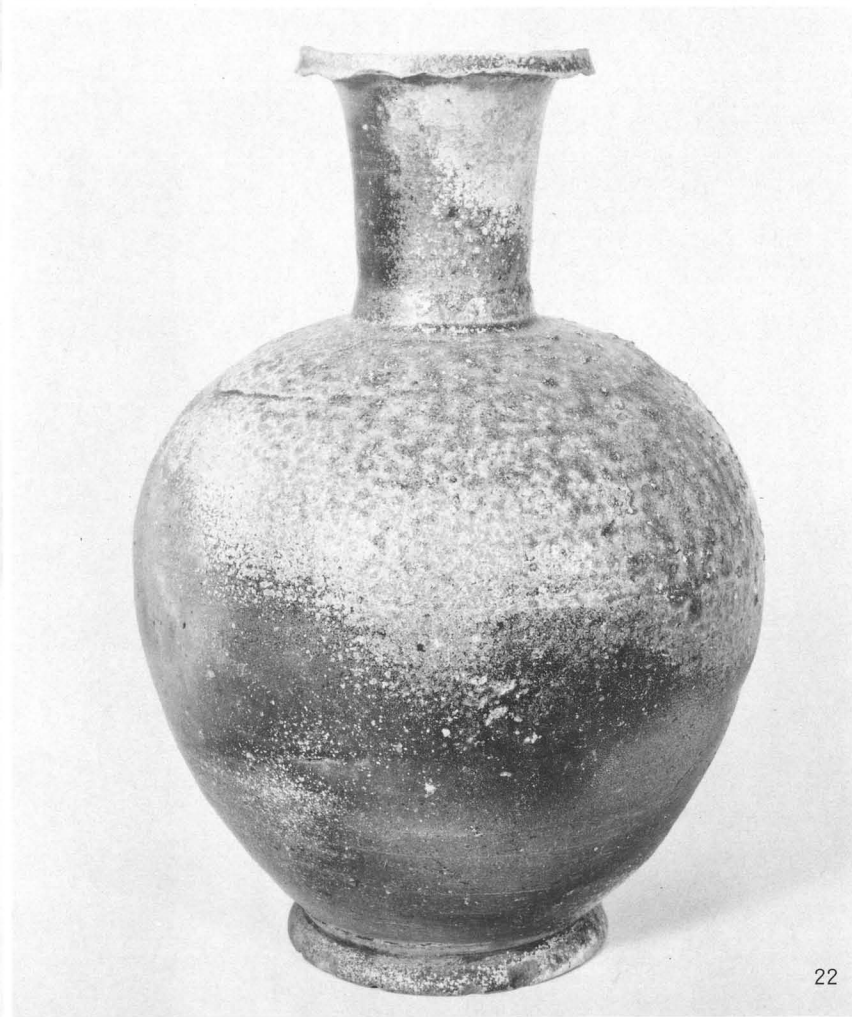
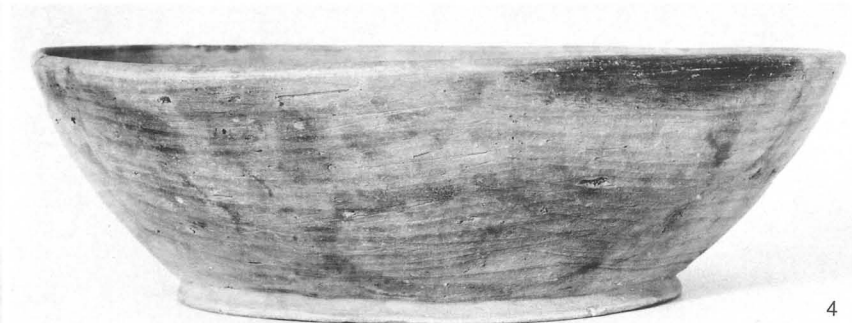
6671—D

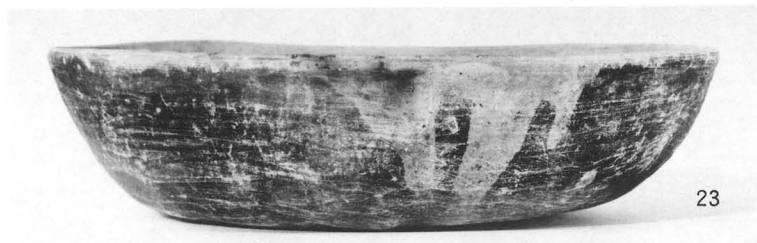


6723

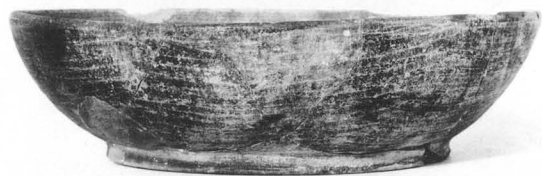


6151—A
6760—A





23



24



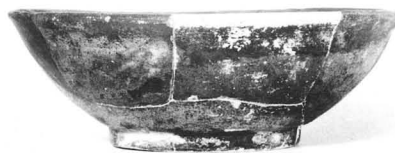
30



34



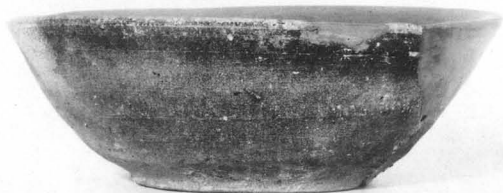
36



37



38



44



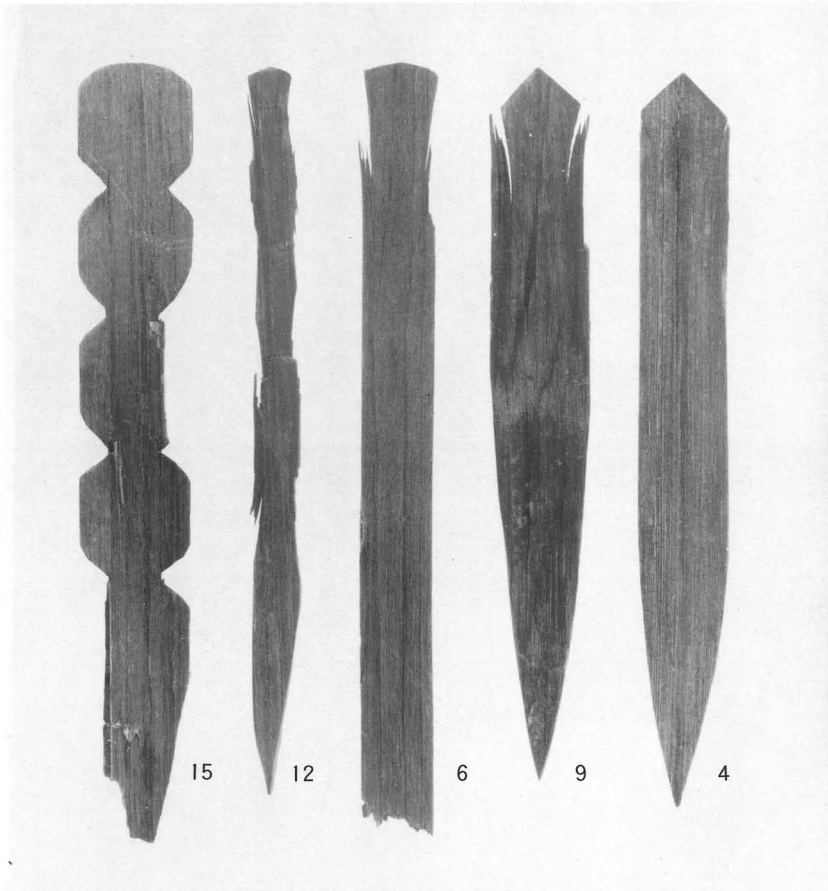
49



47



14



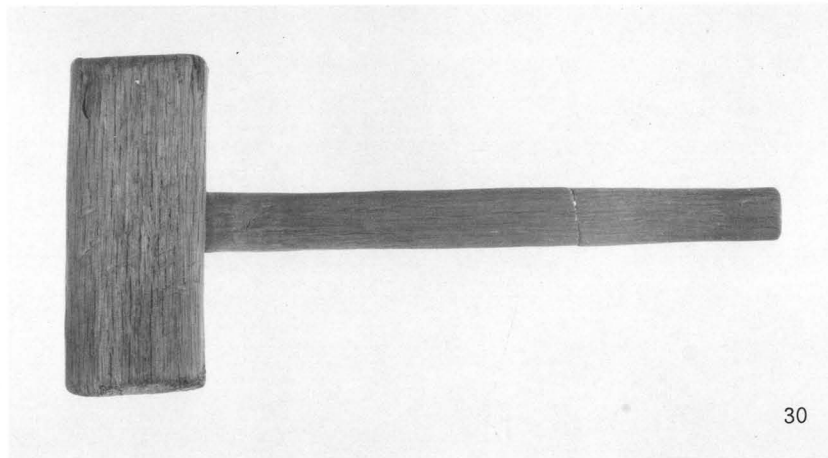
15

12

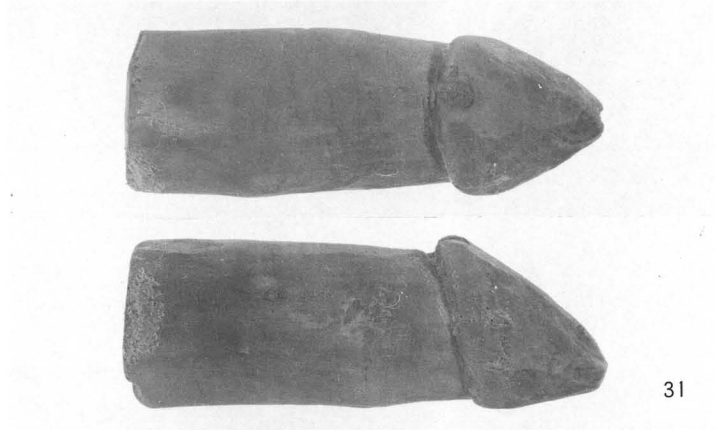
6

9

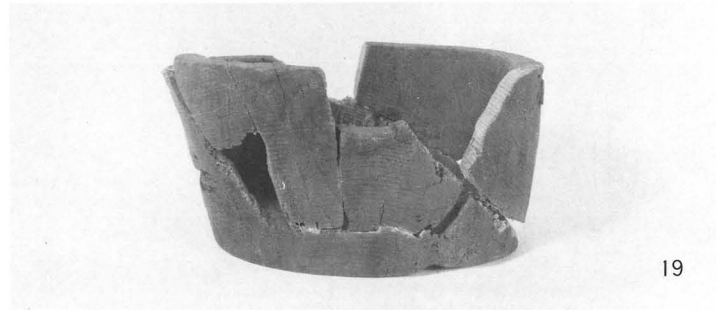
4



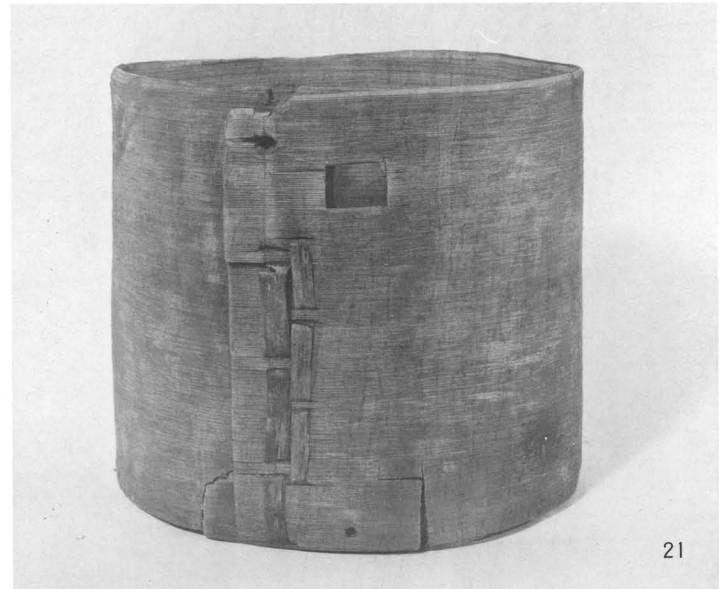
30



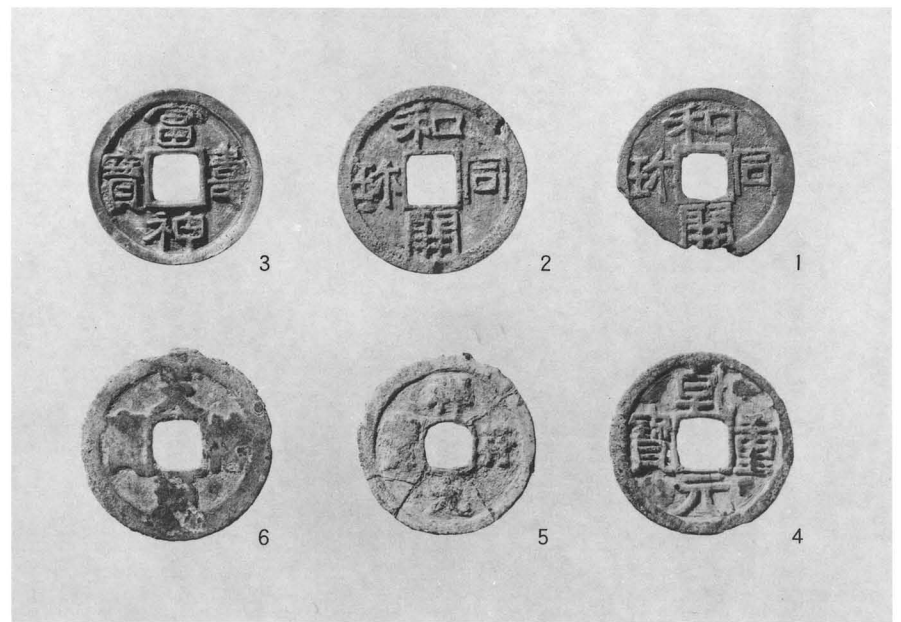
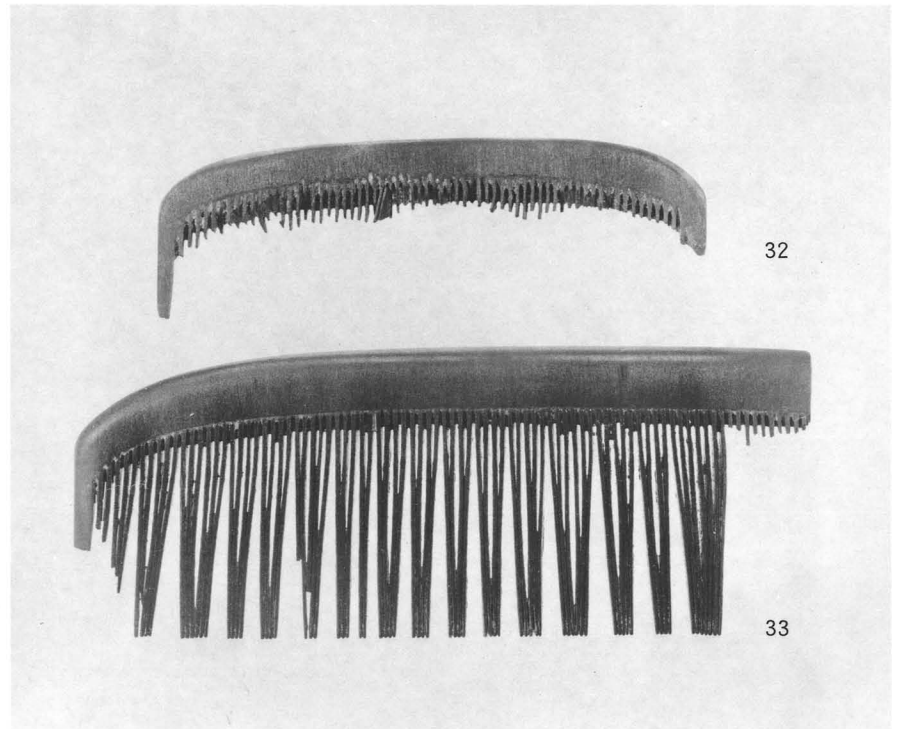
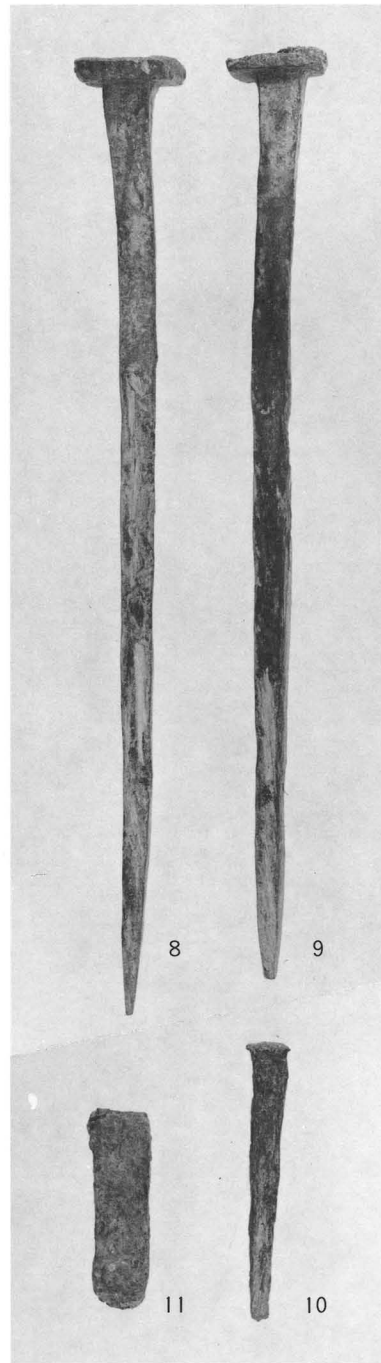
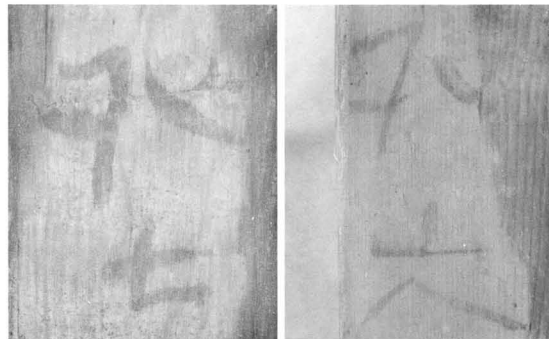
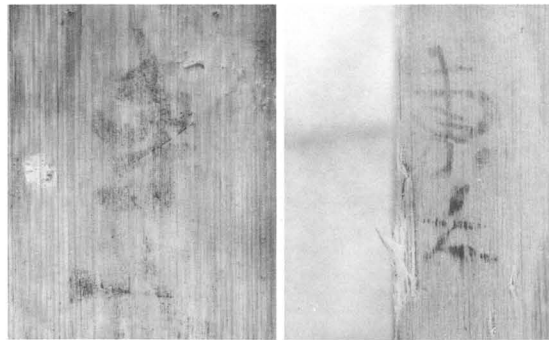
31



19



21

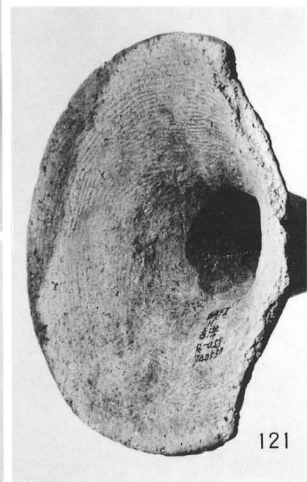
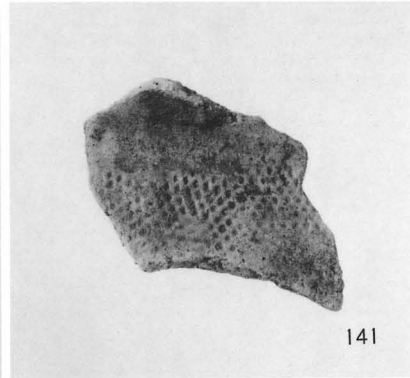


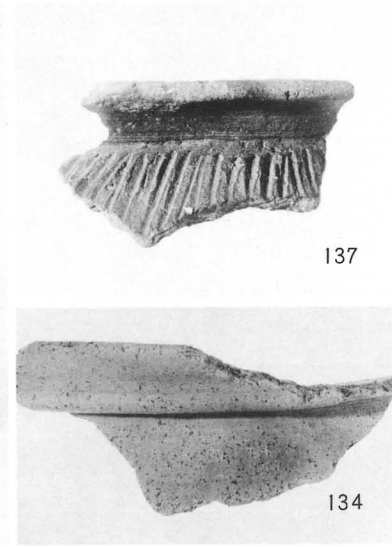
SE877井戸梓番付 1 : 2

1 : 2

1 : 1

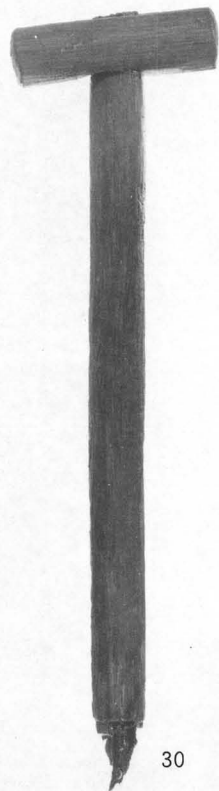




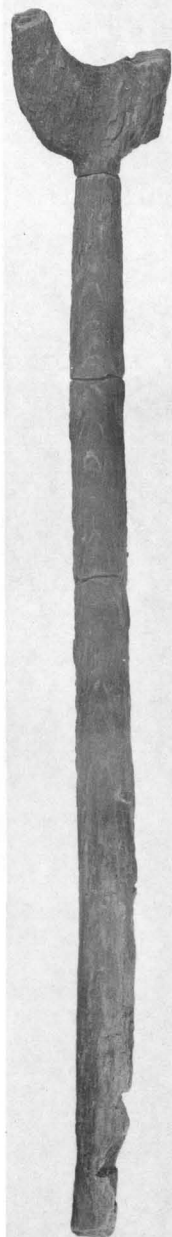




31



30



32



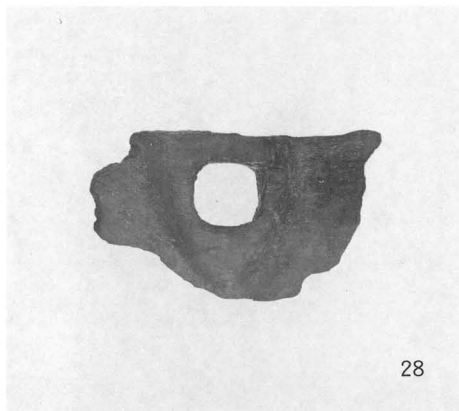
1



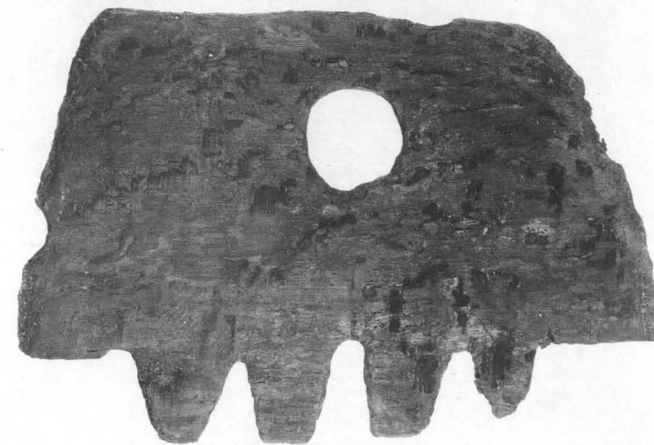
2



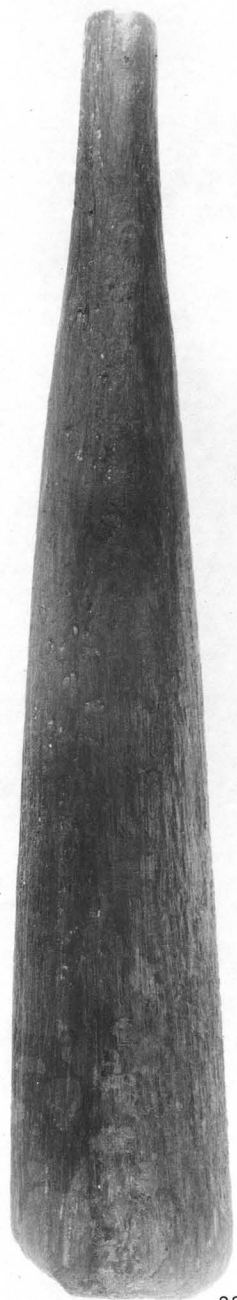
20



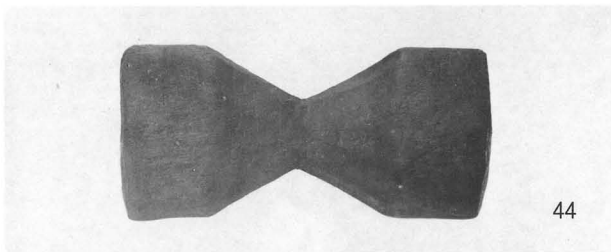
28



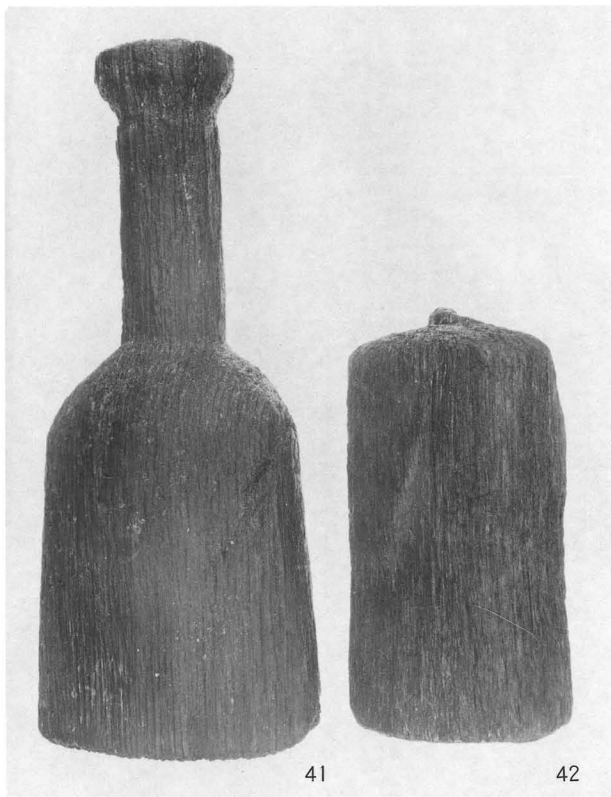
22



33

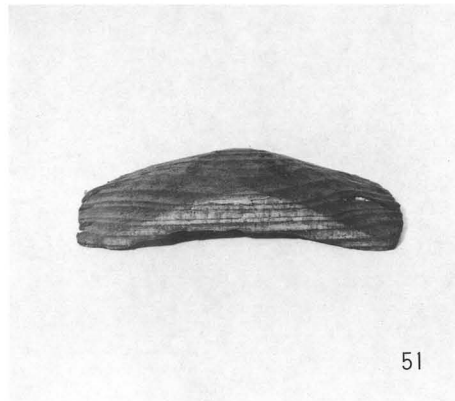


44



41

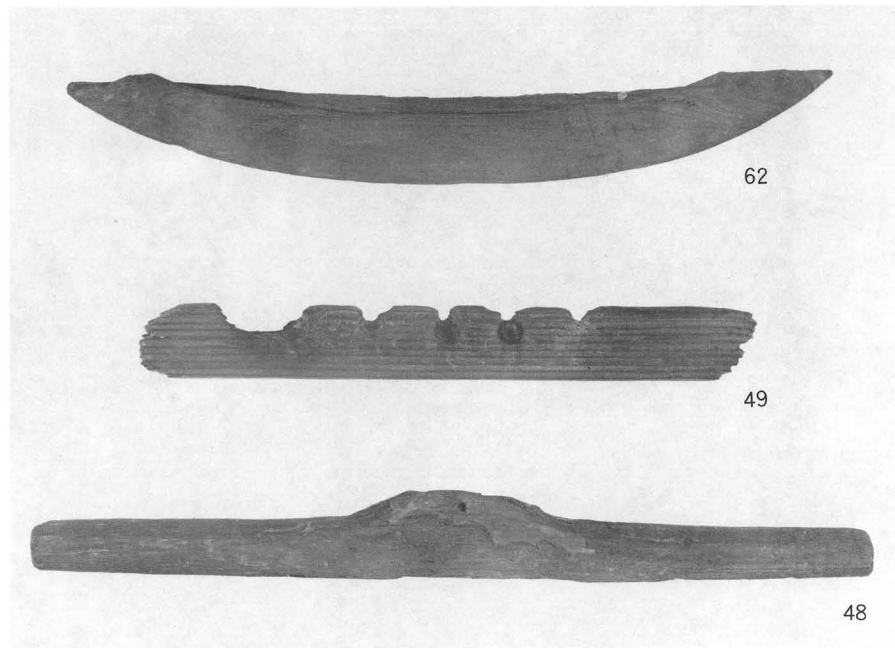
42



51



79



62

49

48



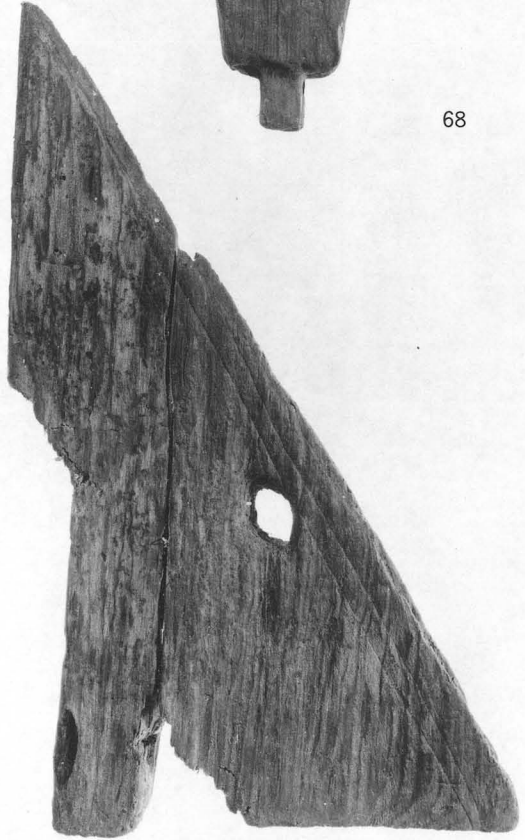
50

1 : 3

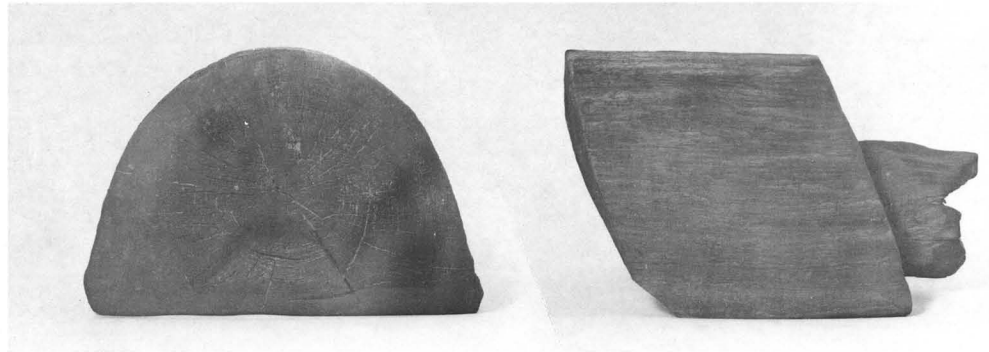
50 1 : 4, 79 1 : 1



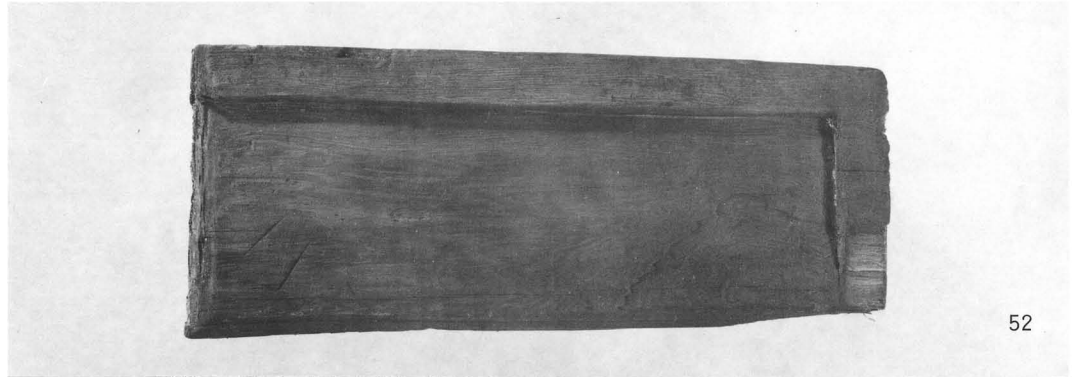
68



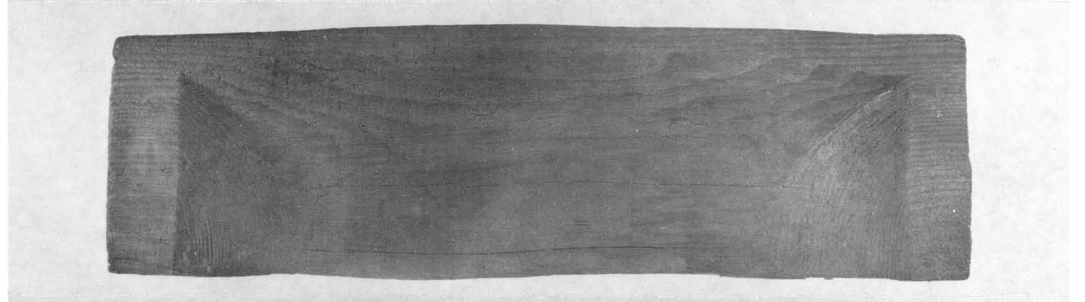
64



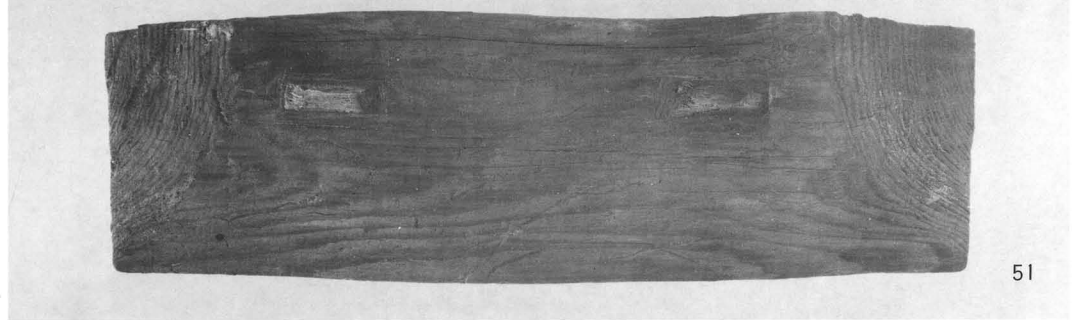
63



52



51



51

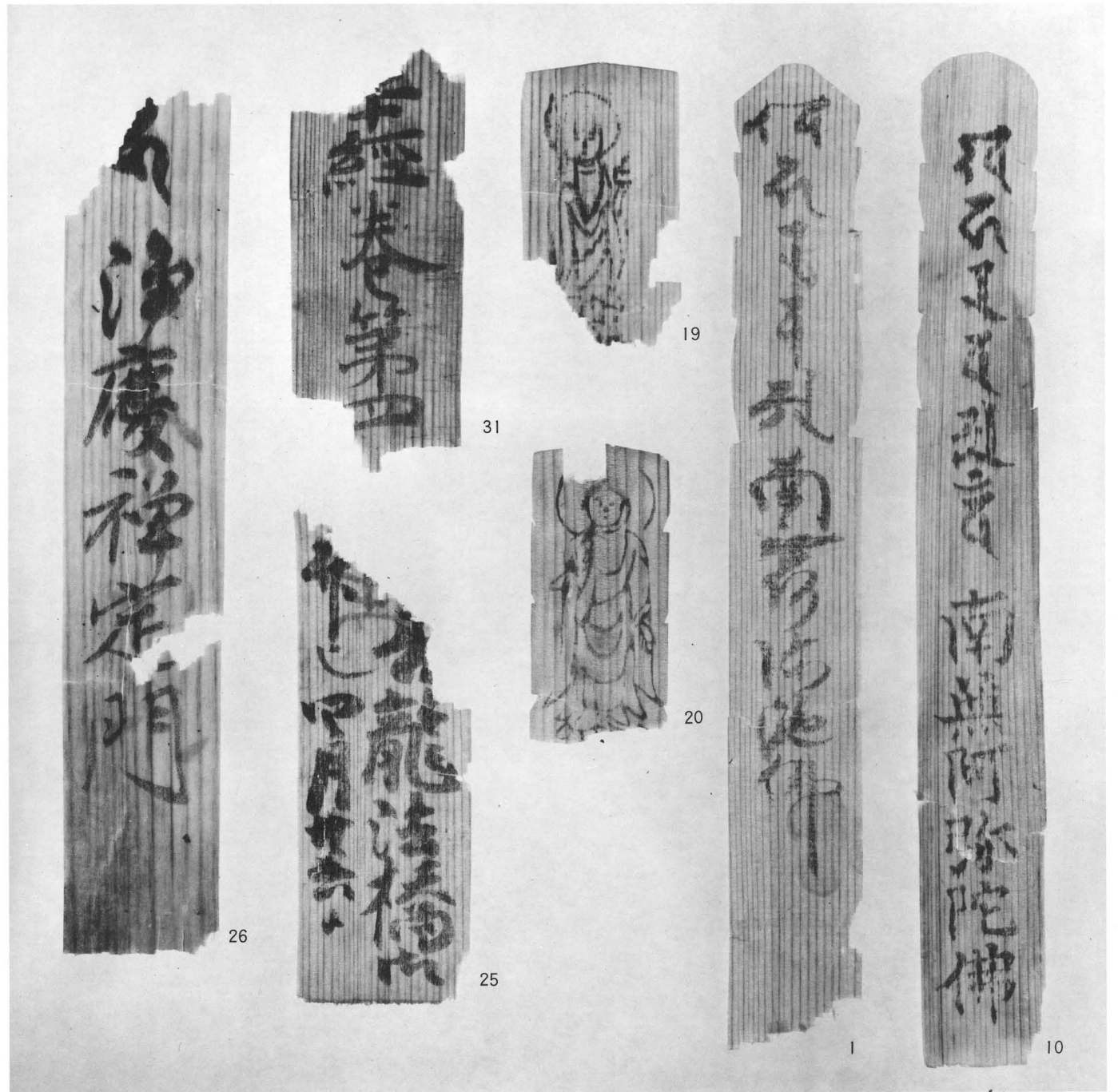


21



28

1 : 2



19

31

20

26

25

1

10

1 : 1

